



FITTINGS INDEX

GENERAL INSTRUCTIONS	4.2
LINE 301 - 302	
PUSH-IN FITTINGS	4.3
PUSH-IN PARALLEL FITTINGS.....	4.4
PUSH-IN TAPERED FITTINGS	4.9
PUSH-IN INTERMEDIATE FITTINGS	4.11
LINE 321-322	
SPEED CONTROLLERS	4.17
PARALLEL AND TAPERED SPEED CONTROLLERS...	4.18
IN LINE SPEED CONTROLLERS.....	4.19
LINE 341	
3 WAYS HAND VALVES	4.20
LINE 351-352	
BALL VALVES.....	4.21
LINE 331 - 361	
AUXILIARY VALVES.....	4.23
LINE 311	
STANDARD FITTINGS	4.25
LINE 312	
QUICK FITTINGS.....	4.34
LINE D00	
CONVEYORS	4.39
LINE 391	
SILENCERS	4.40
GAUGES	4.43

GENERAL INSTRUCTIONS USING PRECAUTIONS

CONSUMPTION OF AIR IN THE CYLINDERS - THEORETICAL VALUES

AIR PREPARATION




VALVES

CYLINDERS



FITTINGS


WATER PREPARATION

CLASSIFICATION OF WARNING INDICATIONS

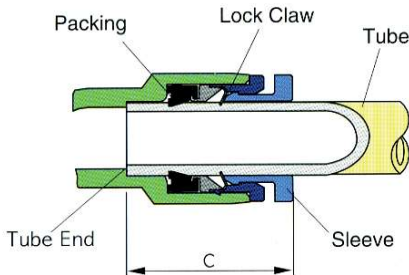
-  **DANGER** Risk of death or serious injury. (the most dangerous condition).
-  **WARNING** Potential risk of danger, death or serious injury. (potential danger)
-  **CAUTION** Potential risk of danger and of financial damage.

COMMON PRECAUTIONS

-  **DANGER** Never use for the following:
 1. As medical equipment for the purpose of safeguard of human health.
 2. As equipment for the movement of people.
 3. As equipment requiring essential safety.
-  **WARNING** Never use in the following environment:
 1. Using for applications other than originally intended.
 2. Application having excessive vibration, shock, rotation and curve.
 3. Applications containing corrosive gas, inflammable/flam- mable gas, chemicals, sea water, water and vapour. Never disassemble or modify the Fitting: this may cause malfunctioning or leakage. Before any intervention on the Fitting, make sure that air pressure has been removed. Never tamper with the sleeve of fitting when pressure is on.

-  **CAUTION**
Never assemble the Fitting with parts from other manufac- tures: this may cause leakage or malfunctioning.

DIS. 1





TAB. 1

SIZE	POLYURETHANE tube	NYLON tube
Ø 3mm	± 0.10	± 0.08
Ø 4mm	± 0.10	± 0.08
Ø 6mm	± 0.12	± 0.10
Ø 8mm	± 0.12	± 0.10
Ø 10mm	± 0.15	± 0.12
Ø 12mm	± 0.15	± 0.12
Ø 16mm	± 0.15	± 0.15

PRECAUTIONS IN FITTINGS USE

Never fail to check the following

-  **WARNING**
 1. Never use for fluids other than air.
 2. Never use in any environment in presence of fire or spark- les.
 3. Be sure to use with Rotary Joint to prevent damage or leakage in case of frequent rotations.
 4. Before using the Fittings, be sure to check static electric- ity prevention requirements.
 5. Avoid excessive bending, twisting and drawing on fit- tings, beyond provided limits.
-  **CAUTION**
 1. Be sure to meet the following conditions for the tube, otherwise it may cause leakage of air or problem of the application (tab. 1).
 2. Cautions in the application of tube:
Be sure that the section of tube is cut at right angle. Make sure that there is no mark on the outside of the tube. Be sure to refer to the following for application and re- moval of tube.
AIRCOMP equipment is made to follow a 2-step insertion of tubing into the fitting.
The first step goes past the Lock Claws and the second step goes into the Packing.
Make sure the second step has been acquired. (dis. 1)
 3. Cautions on disconnecting tube:
Before disconnecting tube, be sure to confirm that the pressure inside the tube is zero.
Before disconnecting tube, pull it out after pressing the sleeve equally on both sides.
Unequal pressing strength will make scratch on tube by insufficient opening of lock claws, this will cause air leak- age.
Be sure not to shake or make 360° rotation when discon- necting the tube.
This might scratch the tube.
 4. Precautions in screwing the Fitting:
When assembling the Fitting, use the suitable tools.
When screwing the Fitting, please refer to the "Recom- mended Torque" hereunder (tab 2).
If torque is higher than the recommended, this may cause damage or air leakage.
If torque is lower than the recommended, this may cause air leakage.

TAB. 2

Thread type	Thread Size	Torque (Kgf - cm)
Metric Thread	M 5	15 - 19
	R 1/8	70 - 90
Taper Thread Teflon-coated	R 1/4	120 - 140
	R 3/8	220 - 240
	R 1/2	280 - 300
Parallel thread Size	G 1/8	200 - 250
	G 1/4	300 - 350
	G 3/8	450 - 500
	G 1/2	550 - 600

LINE 301-302 | PUSH-IN FITTINGS



AIR PREPARATION

VALVES

CYLINDERS

FITTINGS

WATER PREPARATION

TECHNICAL DATA

Applications

compressed air/vacuum

Fluid

air (no other gases or liquids)

Working pressure

0 - 16 bar

Vacuum

- 0,5 bar

Temperature range

-20 ÷ 80°C

Recommended hoses

Nylon, Polyurethane

The technopolymer Aircomp push-in fittings allow a fast connections of different flexible hoses types. These fittings are available in different tread versions: tapered with teflon, parallel and intermediate (hose/hose).

GUIDE TO REFERENCES

301 01 08 14

Line

- 301** Tapered fitting
Intermediate fitting
- 302** Parallel fitting

Type

Please check it in following pages

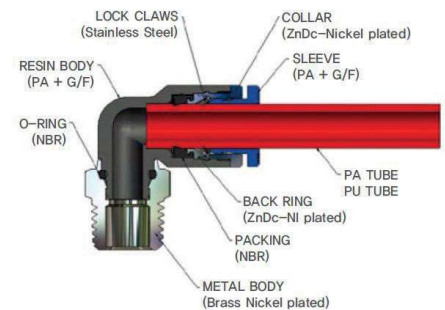
Thread Size

- 18** = 1/8
- 14** = 1/4
- 18** = 1/8
- 38** = 3/8
- 12** = 1/2
- M5** = M5

Ø Tube diameter

- 04** = 4 mm tube
- 06** = 6 mm tube
- 08** = 8 mm tube
- 10** = 10 mm tube
- 12** = 12 mm

Structural Diagram

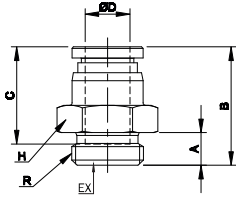
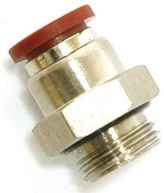


LINE 302 | PUSH-IN PARALLEL FITTINGS

AIR PREPARATION

302.01

Straight male



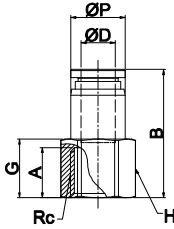
CODE	ØD	R	A	B	H	EX	Bag Qty
3020104M5	4	M5	4	20,1	8	2	10
302010418		G1/8	5	18,4	13	3	10
302010414		G1/4	6	18,1	16	3	10
3020106M5	6	M5	4	21,8	11	2	10
302010618		G1/8	5	23,1	13	4	10
302010614		G1/4	6	19,8	16	4	10
302010818	8	G1/8	5	26	13	5	10
302010814		G1/4	6	21,7	16	6	10
302010838		G3/8	7	22,7	20	6	10
302011014	10	G1/4	6	28,3	16	6	10
302011038		G3/8	7	24,3	20	8	10
302011012		G1/2	8,5	24,8	24	8	5
302011214	12	G1/4	6	32,4	19	6	5
302011238		G3/8	7	32,4	20	9	5
302011212		G1/2	8,5	28,9	24	10	5

VALVES

CYLINDERS

302.23

Straight female

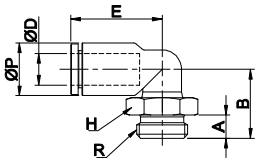


CODE	ØD	R	ØP	G	A	B	H	Bag Qty
302230418	4	G1/8	8,8	11	9	24,4	13	10
302230414		G1/4	8,8	14	12	27,4	16	10
302230618	6	G1/8	11	11	9	25,4	13	10
302230614		G1/4	11	14	12	28,4	16	10
302230818	8	G1/8	13	10	9	27,7	13	10
302230814		G1/4	13	14	12	30,7	16	10
302230838		G3/8	13	15	13	31,7	19	10
302231014	10	G1/4	15,5	13	12	32,4	16	10
302231038		G3/8	15,5	15	13	33,4	19	5
302231012		G1/2	15,5	18	16	36,4	24	5
302231214	12	G1/4	18,8	12	12	35,4	19	5
302231238		G3/8	18,8	15	13	36,4	19	5
302231212		G1/2	18,8	18	16	39,4	24	5

FITTINGS

302.02

Elbow male



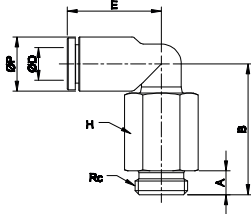
CODE	ØD	R	ØP	A	B	E	H	Bag Qty
3020204M5	4	M5	9	4	14,6	17,1	9	10
302020418		G1/8	9	5	14,6	17,1	13	10
302020414		G1/4	9	6	15,3	17,1	16	10
3020206M5	6	M5	11,2	4	15,7	18	9	10
302020618		G1/8	11,2	5	15,7	18	13	10
302020614		G1/4	11,2	6	16,4	18	16	10
302020818	8	G1/8	13,6	5	19,6	23,6	13	10
302020814		G1/4	13,6	6	17,8	23,6	16	10
302020838		G3/8	13,6	7	18,8	23,6	20	10
302021014	10	G1/4	16,3	6	22,6	25	16	5
302021038		G3/8	16,3	7	21,1	25	20	5
302021012		G1/2	16,3	8,5	22,6	25	24	5
302021214	12	G1/4	19,7	6	24,5	32,2	16	5
302021238		G3/8	19,7	7	23	32,2	20	5
302021212		G1/2	19,7	8,5	24,5	32,2	24	5

AIR PREPARATION

LINE 302 | PUSH-IN PARALLEL FITTINGS

302.10

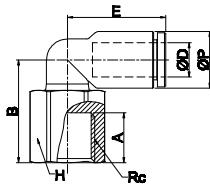
Extra elbow male



CODE	ØD	R	ØP	A	B	E	H	Bag Qty
3021004M5	4	M5	9	4	27,1	17,1	9	10
302100418		G1/8	9	5	27,1	17,1	13	10
302100414		G1/4	9	6	27,8	17,1	16	10
3021006M5	6	M5	11.2	4	28,2	18	9	10
302100618		G1/8	11.2	5	28,2	18	13	10
302100614		G1/4	11.2	6	28,9	18	16	10
302100818	8	G1/8	13.6	5	34,6	23,6	13	10
302100814		G1/4	13.6	6	32,8	23,6	16	10
302100838		G3/8	13.6	7	33,8	23,6	20	5
302101014	10	G1/4	16.3	6	43,8	25	16	5
302101038		G3/8	16.3	7	42,3	25	20	5
302101012		G1/2	16.3	8,5	43,8	25	24	5
302101214	12	G1/4	19.7	6	45,65	32,2	16	5
302101238		G3/8	19.7	7	44,15	32,2	20	5
302101212		G1/2	19.7	8,5	45,65	32,2	24	5

302.29

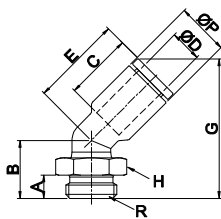
Elbow female



CODE	ØD	R	ØP	A	B	E	H	Bag Qty
302290418	4	G1/8	9	9	18,6	17,1	13	10
302290414		G1/4	9	12	21,6	17,1	16	10
302290618	6	G1/8	11.2	9	19,7	18	13	10
302290614		G1/4	11.2	12	22,7	18	16	10
302290818	8	G1/8	13.6	9	21,7	23,6	13	10
302290814		G1/4	13.6	12	24,7	23,6	16	10
302290838		G3/8	13.6	13	25,7	23,6	19	5
302291014	10	G1/4	16.3	12	26	25	16	5
302291038		G3/8	16.3	13	27	25	19	5
302291012		G1/2	16.3	16	30	25	24	5
302291214	12	G1/4	19.7	12	27,9	32,2	16	5
302291238		G3/8	19.7	13	28,9	32,2	19	5
302291212		G1/2	19.7	16	31,9	32,2	24	5

302.61

45° Elbow male



CODE	ØD	R	ØP	A	B	C	E	H	G	Bag Qty
3026104M5	4	M5	10,4	4	22	16	18,1	10	34,76	10
302610418		G1/8	10,4	5	23,6	16	18,1	10	38,76	10
302610414		G1/4	10,4	6	25,6	16	18,1	12	40,36	10
3026106M5	6	M5	12,4	4	21,9	17	20,1	12	36,08	10
302610618		G1/8	11.2	5	13,7	15,5	18	13	30,1	10
302610614		G1/4	11.2	6	14,4	15,5	18	16	30,8	10
302610818	8	G1/8	13.6	5	16,8	17,8	23,6	13	37,91	10
302610814		G1/4	13.6	6	15	17,8	23,6	16	36,11	10
302610838		G3/8	13.6	7	16	17,8	23,6	20	37,11	10
302611014	10	G1/4	16.3	6	18,6	19,4	25	16	41,65	5
302611038		G3/8	16.3	7	17,1	19,4	25	20	40,15	5
302611012		G1/2	16.3	8,5	18,6	19,4	25	24	41,65	5
302611214	12	G1/4	19.7	6	20,1	22,4	32,2	16	49,41	5
302611238		G3/8	19.7	7	18,6	22,4	32,2	20	47,91	5
302611212		G1/2	19.7	8,5	20,1	22,4	32,2	24	49,41	5

AIR PREPARATION

VALVES

CYLINDERS

FITTINGS

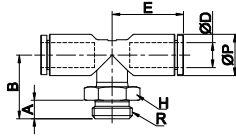
WATER PREPARATION

LINE 302 | PUSH-IN PARALLEL FITTINGS

AIR PREPARATION

302.03

"T" central male



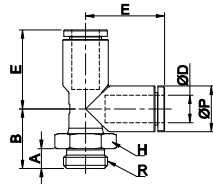
VALVES

CODE	ØD	R	ØP	A	B	E	H	Bag Qty
3020304M5	4	M5	9	4	16,6	17,1	9	10
302030418		G1/8	9	5	16,6	17,1	13	10
302030414		G1/4	9	6	17,3	17,1	16	10
3020306M5	6	M5	11,2	4	17,7	18	9	10
302030618		G1/8	11,2	5	17,7	18	13	10
302030614		G1/4	11,2	6	18,4	18	16	10
302030818	8	G1/8	13,6	5	22,8	23,6	13	10
302030814		G1/4	13,6	6	21	23,6	16	10
302030838		G3/8	13,6	7	22	23,6	20	5
302031014	10	G1/4	16,3	6	24,8	25	16	5
302031038		G3/8	16,3	7	23,3	25	20	5
302031012		G1/2	16,3	8,5	24,8	25	24	5
302031214	12	G1/4	19,7	6	26,5	32,2	16	5
302031238		G3/8	19,7	7	25	32,2	20	5
302031212		G1/2	19,7	8,5	26,5	32,2	24	5

CYLINDERS

302.07

"T" lateral male



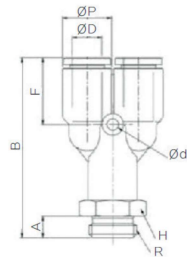
FITTINGS

CODE	ØD	R	ØP	A	B	E	H	Bag Qty
3020704M5	4	M5	9	4	14,6	17,1	9	10
302070418		G1/8	9	5	14,6	17,1	13	10
302070414		G1/4	9	6	15,3	17,1	16	10
3020706M5	6	M5	11,2	4	15,7	19	9	10
302070618		G1/8	11,2	5	15,7	19	13	10
302070614		G1/4	11,2	6	16,4	19	16	10
302070818	8	G1/8	13,6	5	19,6	23,6	13	10
302070814		G1/4	13,6	6	17,8	23,6	16	10
302070838		G3/8	13,6	7	18,8	23,6	20	5
302071014	10	G1/4	16,3	6	22,6	25	16	5
302071038		G3/8	16,3	7	21,1	25	20	5
302071012		G1/2	16,3	8,5	22,6	25	24	5
302071214	12	G1/4	19,7	6	24,5	32,2	16	5
302071238		G3/8	19,7	7	23	32,2	20	5
302071212		G1/2	19,7	8,5	24,5	32,2	24	5

WATER PREPARATION

302.09

"Y" male



CODE	ØD	R	ØP	A	B	Ød	F	H	Bag Qty
3020904M5	4	M5	9	4	37,4	3,2	13,2	9	10
302090418		G1/8	9	5	37,4	3,2	13,2	13	10
302090414		G1/4	9	6	38,1	3,2	13,2	16	10
3020906M5	6	M5	11,2	4	40,5	3,2	14,1	11	10
302090618		G1/8	11,2	5	40,5	3,2	14,1	13	10
302090614		G1/4	11,2	6	41,2	3,2	14,1	16	10
302090818	8	G1/8	13,6	5	48,9	3,2	18,6	13	10
302090814		G1/4	13,6	6	50,1	3,2	18,6	16	10
302090838		G3/8	13,6	7	51,1	3,2	18,6	20	5
302091014	10	G1/4	16,3	6	54,5	4,2	18	17	10
302091038		G3/8	16,3	7	53	4,2	18	20	10
302091012		G1/2	16,3	8,5	54,5	4,2	18	24	10
302091214	12	G1/4	19,7	6	64,4	4,2	23,9	19	10
302091238		G3/8	19,7	7	62,9	4,2	23,9	20	10
302091212		G1/2	19,7	8,5	64,4	4,2	23,9	24	10

LINE 302 | PUSH-IN PARALLEL FITTINGS

AIR PREPARATION

VALVES

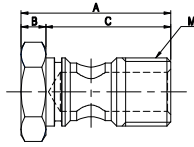
CYLINDERS

FITTINGS

WATER PREPARATION

302.53

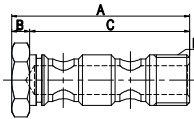
Single screw



CODE	M	A	B	C	H	Bag Qty
3025318	G1/8	26,5	4	22,5	14	10
3025314	G1/4	32	5	27	17	10

302.54

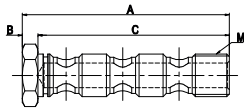
Double screw



CODE	M	A	B	C	H	Bag Qty
3025418	G1/8	43,5	4	39,5	14	10
3025414	G1/4	51	5	46	17	10

302.55

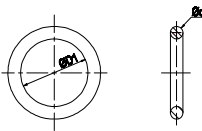
Triple screw (only air)



CODE	M	A	B	C	H	Bag Qty
3025518	G1/8	60,5	4	56,5	14	10
3025514	G1/4	70	5	65	17	10

302.56

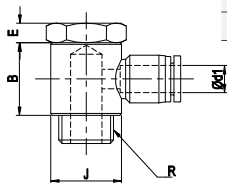
Ring sealing



CODE	ØD1	Ød	Bag Qty
3025614	G1/4	1,5	10
3025618	G1/8	1,5	10

302.51

Single banjo ring



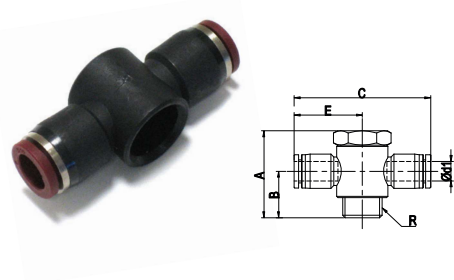
CODE	ØD1	R	B	E	Bag Qty
302510418	4	G1/8	14	4	10
302510618	6	G1/8	14	4	10
302510614		G1/4	17,5	5	10
302510818	8	G1/8	14	4	10
302510814		G1/4	17,5	5	10
302510838		G3/8	19,5	6	5

LINE 302 | PUSH-IN PARALLEL FITTINGS

AIR PREPARATION

302.52

"T" single banjo ring

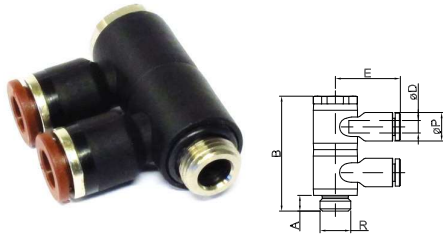


CODE	ØD1	R	A	B	C	Bag Qty
302520418	4	G1/8	26,5	14	46,8	10
302520618	6	G1/8	26,5	14	49,6	5
302520614		G1/4	32	17,5	51,8	5
302520818	8	G1/8	26,5	14	52,6	5
302520814		G1/4	32	17,5	52,6	5
302520838		G3/8	36,5	19,5	52,6	5

VALVES

302.57

Double elbow



CODE	ØD	R	ØP	A	B	E	Bag Qty
302570418	4	1/8	9	5	36,5	21,5	5
302570414		1/4	9	6	45	24	5
302570618	6	1/8	11,2	5	36,5	22,5	5
302570614		1/4	11,2	6	45	25	5
302570818	8	1/8	13,6	5	36,5	25,6	5
302570814		1/4	13,6	6	45	28,1	5
302570838		3/8	13,6	7	53	29,8	5
302571014	10	1/4	16,3	6	45	28,9	5
302571038		3/8	16,3	7	53	30,6	5
302571012		1/2	16,3	8,5	57,5	32,9	5
302571238	12	3/8	19,7	7	53	35,9	3
302571212		1/2	19,7	8,5	57,5	38,2	2

CYLINDERS

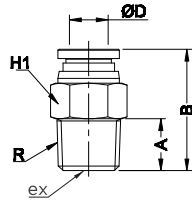
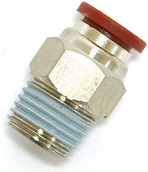
FITTINGS

WATER PREPARATION

LINE 301 | PUSH-IN TAPERED FITTINGS

301.01

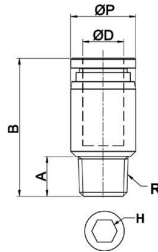
Straight male



CODE	ØD	R	A	B	H1	EX	Bag Qty
301010418	4	1/8	8	20,1	10	3	10
301010414		1/4	11	20,1	14	3	10
301010618	6	1/8	8	22	11	4	10
301010614		1/4	11	22,8	14	4	10
301010818	8	1/8	8	27,7	13	5	10
301010814		1/4	11	25,7	14	6	10
301010838		3/8	12	23,7	17	6	10
301011014	10	1/4	11	32,4	17	6	10
301011038		3/8	12	28,4	17	8	10
301011012		1/2	15	27,3	21	8	10
301011214	12	1/4	11	35,4	19	6	10
301011238		3/8	12	31,8	19	8	10
301011212		1/2	15	33,8	21	8	5

301.22

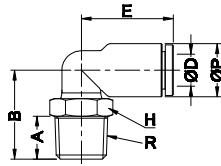
Straight round male



CODE	ØD	R	ØP	A	B	H	Bag Qty
301220418	4	1/8	10	8	20,1	3	10
301220414		1/4	13,5	11	20,1	3	10
301220618	6	1/8	11	8	22	4	10
301220614		1/4	13,5	11	22,8	4	10
301220818	8	1/8	13	8	27,7	5	10
301220814		1/4	13,5	11	25,7	6	10
301220838		3/8	17	12	23,7	6	10
301221014	10	1/4	15,5	11	32,4	6	10
301221038		3/8	17	12	28,4	8	10
301221012		1/2	21	15	27,3	8	10
301221214	12	1/4	18,8	11	35,4	6	10
301221238		3/8	18,8	12	31,8	8	10
301221212		1/2	21	15	33,8	8	5

301.02

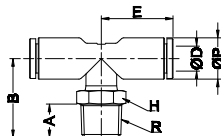
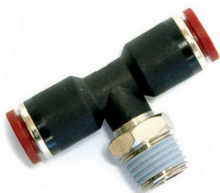
Elbow male



CODE	ØD	R	ØP	A	B	E	H	Bag Qty
301020418	4	1/8	9	8	17,8	17,1	10	10
301020414		1/4	9	11	20,8	17,1	14	10
301020618	6	1/8	11,2	8	18,9	18	10	10
301020614		1/4	11,2	11	21,9	18	14	10
301020818	8	1/8	13,6	8	20,3	23,6	10	10
301020814		1/4	13,6	11	22,8	23,6	14	10
301020838		3/8	13,6	12	23,8	23,6	17	10
301021014	10	1/4	16,3	11	26,6	25	17	5
301021038		3/8	16,3	12	26,1	25	17	5
301021012		1/2	16,3	15	29,1	25	21	5
301021214	12	1/4	19,7	11	28,5	32,2	17	5
301021238		3/8	19,7	12	28	32,2	17	5
301021212		1/2	19,7	15	31	32,2	21	5

301.03

"T" central male



CODE	ØD	R	ØP	A	B	E	H	Bag Qty
301030418	4	1/8	9	8	19,8	17,1	10	10
301030414		1/4	9	11	22,8	17,1	14	10
301030618	6	1/8	11,2	8	20,9	18	10	10
301030614		1/4	11,2	11	23,9	18	14	10
301030818	8	1/8	13,6	8	23,5	23,6	10	10
301030814		1/4	13,6	11	26	23,6	14	10
301030838		3/8	13,6	12	27	23,6	17	5
301031014	10	1/4	16,3	11	28,8	25	17	5
301031038		3/8	16,3	12	28,3	25	17	5
301031012		1/2	16,3	15	31,3	25	21	5
301031214	12	1/4	19,7	11	30,5	32,2	17	5
301031238		3/8	19,7	12	30	32,2	17	5
301031212		1/2	19,7	15	33	32,2	21	5

AIR PREPARATION

VALVES

CYLINDERS

FITTINGS

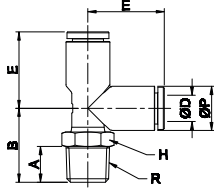
WATER PREPARATION

LINE 301 | PUSH-IN TAPERED FITTINGS

AIR PREPARATION

301.07

"T" lateral male



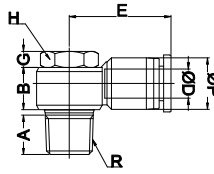
VALVES

CODE	ØD	R	ØP	A	B	E	H	Bag Qty
301070418	4	1/8	9	8	17,8	17,1	10	10
301070414		1/4	9	11	20,8	17,1	14	10
301070618	6	1/8	11,2	8	18,9	19	10	10
301070614		1/4	11,2	11	21,9	19	14	10
301070818	8	1/8	13,6	8	20,3	23,6	10	10
301070814		1/4	13,6	11	22,8	23,6	14	10
301070838	10	3/8	13,6	12	23,8	23,6	17	5
301071014		1/4	16,3	11	26,6	25	17	5
301071038	12	3/8	16,3	12	26,1	25	17	5
301071012		1/2	16,3	15	29,1	25	21	5
301071214	12	1/4	19,7	11	28,5	32,2	17	5
301071238		3/8	19,7	12	28	32,2	17	5
301071212	1/2	19,7	15	31	32,2	21	5	

CYLINDERS

301.25

Banjo male



FITTINGS

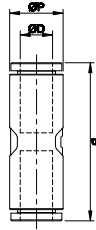
CODE	ØD	R	ØP	A	B	E	H	G	Bag Qty
301250418	4	1/8	10,4	8	12	22,4	10	4	10
301250414		1/4	10,4	11	11,8	24,4	10	4,5	10
301250618	6	1/8	12,4	8	12	23,6	10	4	10
301250614		1/4	12,4	11	11,8	25,7	14	4,5	10
301250818	8	1/8	14,4	8	12	25	10	4	10
301250814		1/4	14,4	11	11,8	28,2	14	4,5	10
301250838	10	3/8	14,4	12	15,5	28,6	19	5	5
301251014		1/4	17,6	11	11,8	31,2	14	4,5	5
301251038	12	3/8	17,6	12	15,5	31,6	19	5	5
301251012		1/2	17,6	15	17,7	34,5	24	5	5
301251214	12	1/4	21	11	11,8	34,8	14	4,5	5
301251238		3/8	21	12	15,5	36	19	5	5
301251212	1/2	21	15	17,7	36	24	5	5	

WATER PREPARATION

LINE 301 | PUSH-IN INTERMEDIATE FITTINGS

301.04

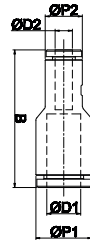
Straight union



CODE	ØD	ØP	B	Bag Qty	H
301040404	4	9	30,2	10	14
301040606	6	11.2	32	10	17
301040808	8	13.6	40,2	10	14
301041010	10	16.3	40	10	17
301041212	12	19.7	54,8	5	14

301.30

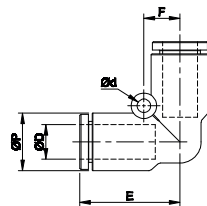
Reducer straight union



CODE	ØD1	ØD2	ØP1	ØP2	B	Bag Qty
301300604	6	4	11.2	9	31,5	10
301300804	8	4	13.6	9	33,3	10
301300806	8	6	13.6	11.2	34,3	10
301301006	10	6	16.3	11.2	35,9	10
301301008	10	8	16.3	13.6	38,2	10
301301208	12	8	19.7	13.6	41,2	5
301301210	12	10	19.7	16.3	42,8	5

301.05

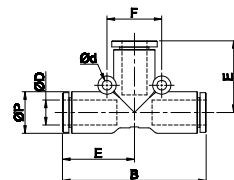
Elbow union



CODE	ØD	ØP	B	F	Ød	Bag Qty
301050404	4	9	17,1	6	3,2	10
301050606	6	11.2	19	6,7	3,2	10
301050808	8	13.6	23,6	8,5	3,2	10
301051010	10	16.3	25	10	4,2	5
301051212	12	19.7	32,2	12	4,2	5

301.06

"T" union



CODE	ØD	ØP	B	E	F	Ød	Bag Qty
301060404	4	9	34,2	17,1	12	3,2	10
301060606	6	11.2	38	19	13	3,2	10
301060808	8	13.6	47,2	23,6	18	3,2	10
301061010	10	16.3	50	25	24	4,2	5
301061212	12	19.7	64,4	32,2	28	4,2	5

AIR PREPARATION

VALVES

CYLINDERS

FITTINGS

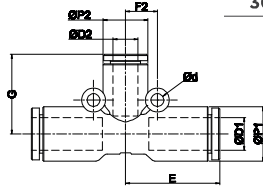
WATER PREPARATION

LINE 301 | PUSH-IN INTERMEDIATE FITTINGS

AIR PREPARATION

301.57

"T" reducer union

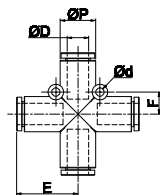


CODE	ØD1	ØD2	ØP1	ØP2	E	F2	G	Ød	Bag Qty
301570604	6	4	11,2	9	19	6	18,1	3,2	10
301570806	8	6	13,6	11,2	23,6	8	20	3,2	10
301571008	10	8	16,3	13,6	25	9,5	24,1	4,2	5
301571210	12	10	19,7	16,3	32,2	10	25,5	4,2	5

VALVES

301.21

Cross union

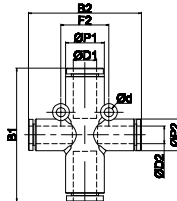


CODE	ØD	ØP	E	F	Ød	Bag Qty
3012104	4	9	17,1	6	3,2	10
3012106	6	11,2	19	6,5	3,2	10
3012108	8	13,6	23,6	8,5	3,2	5
3012110	10	16,3	25	10	4,2	5
3012112	12	19,7	32,2	12	4,2	5

CYLINDERS

301.58

2/2 Cross union

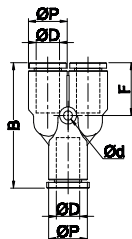


CODE	ØD1	ØD2	ØP1	ØP2	B1	B2	F2	Ød	Bag Qty
301580806	8	6	13,6	11,2	47,2	39,9	17	3,2	5
301581008	10	8	16,3	13,6	50	48,2	20	4,2	5
301581210	12	10	19,7	16,3	64,4	51	24	4,2	5

FITTINGS

301.08

"Y" union



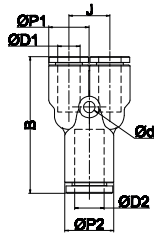
CODE	ØD	ØP	B	F	Ød	Bag Qty
301080404	4	9	31,2	13,2	3,2	10
301080606	6	11,2	34,7	14,1	3,2	10
301080808	8	13,6	44,2	18,6	3,2	10
301081010	10	16,3	46	18	4,2	5
301081212	12	19,7	56,8	23,9	4,2	5

WATER PREPARATION

LINE 301 | PUSH-IN INTERMEDIATE FITTINGS

301.11

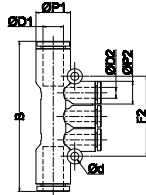
"Y" reducer



CODE	ØD1	ØD2	ØP1	ØP2	B	Ød	F	J	Bag Qty
301110604	4	6	9	11,2	32,5	3,2	13,2	9,3	10
301110804		8	11,2	13,6	38,5	3,2	14,1	11,4	10
301110806	6	8	11,2	13,6	38,5	3,2	14,1	11,4	10
301111008	8	10	13,6	16,3	43,2	3,2	17,8	14,2	5
301111210	10	12	16,3	19,7	50,9	4,2	18	17	5

301.12

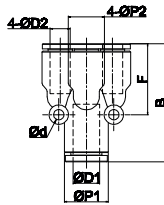
"T" multiple reducer



CODE	ØD1	ØD2	ØP1	ØP2	B	Ød	F2	Bag Qty
301120604	6	4	11,2	9	54,7	3,2	30,6	5
301120804	8	4	13,6	9	59,4	3,2	31,6	5
301120806	8	6	13,6	11,2	66	3,2	38,8	5
301121006	10	6	16,3	11,2	68,8	4,2	38,8	5
301121008	10	8	16,3	13,6	76,4	4,2	47,4	5

301.39

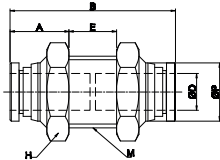
"Y" reducer double union



CODE	ØD1	ØD2	ØP1	ØP2	B	F	Ød	Bag Qty
301390604	6	4	11,2	9	32,5	19,8	3,2	5
301390806	8	6	13,6	11,2	36,6	22	3,2	5

301.19

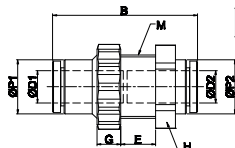
Bulkhead union



CODE	ØD	ØP	M	A	H	B	E	Bag Qty
3011904	4	8.8	M12X1.0	10.7	14	30	8,6	10
3011906	6	11	M14X1.0	11.3	17	31,9	9,4	10
3011908	8	13	M16X1.0	13.2	19	37	10,6	10
3011910	10	15.5	M20X1.0	13.6	24	40,1	12,9	5
3011912	12	18.8	M22X1.0	15.3	26	45,8	15,4	5

301.48

"P" bulkhead union



CODE	ØD1	ØD2	ØP1	ØP2	M	G	H	B	E	Bag Qty
3014804	4	4	9	9	M12X1.5	5	14	30	7,1	10
3014806	6	6	11,2	11,2	M14X1.5	5	17	31,9	8,6	10
3014808	8	8	13,6	13,6	M16X1.5	6	19	36,6	8,8	10
3014810	10	10	16,3	16,3	M20X2.0	6	24	40	10,2	5
3014812	12	12	19,7	19,7	M24X2.0	6	27	46	11,9	5

AIR PREPARATION

VALVES

CYLINDERS

FITTINGS

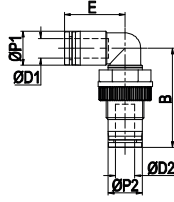
WATER PREPARATION

LINE 301 | PUSH-IN INTERMEDIATE FITTINGS

AIR PREPARATION

301.60

"P" elbow bulkhead union

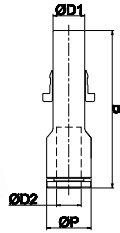


CODE	ØD1	ØD2	ØP1	ØP2	M	E	B	H	Bag Qty
3016004	4	4	10,4	10,4	M12X1.5	19,8	33,6	14	10
3016006	6	6	12,4	12,4	M14X1.5	17,2	37,9	17	10
3016008	8	8	17,4	17,4	M16X1.5	25,7	41,9	19	5
3016010	10	10	17,6	17,6	M20X2.0	30,3	47,6	24	5
3016012	12	12	21,2	21,2	M24X2.0	32,7	53,8	27	5

VALVES

301.18

Plug-in straight reducer

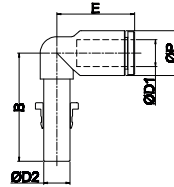


CODE	ØD1	ØD2	ØP	B	Bag Qty
301180604	6	4	9	36,1	10
301180804	8	4	9	36,9	10
301180806	8	6	11,2	39,5	10
301181006	10	6	11,2	40,3	10
301181008	10	8	13,6	45,6	10
301181206	12	6	11,2	45	5
301181208	12	8	13,6	46,6	5
301181210	12	10	16,3	46,6	5

CYLINDERS

301.14

Plug-in elbow

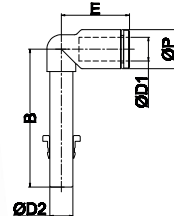


CODE	ØD1	ØD2	ØP	B	E	Bag Qty
3011404	4	4	9	23,5	17,1	10
3011406	6	6	11,2	29,6	18	10
3011408	8	8	13,6	32,8	23,6	10
3011410	10	10	16,3	36,2	25	5
3011412	12	12	19,7	39,9	32,2	5

FITTINGS

301.41

Plug-in extended elbow

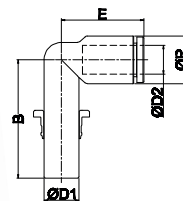


CODE	ØD1	ØD2	ØP	B	E	Bag Qty
3014104	4	4	9	33,5	17,1	10
3014106	6	6	11,2	42,1	18	10
3014108	8	8	13,6	47,8	23,6	10
3014110	10	10	16,3	53,7	25	5
3014112	12	12	19,7	60,9	32,2	5

WATER PREPARATION

301.40

Plug-in reduction elbow

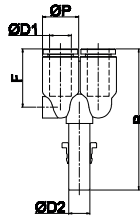


CODE	ØD1	ØD2	ØP	B	E	Bag Qty
301400604	6	4	9	28,5	17,1	10
301400806	8	6	11,2	30,6	18	10
301401008	10	8	13,6	33,8	23,6	10
301401210	12	10	16,3	38,2	25	5

LINE 301 | PUSH-IN INTERMEDIATE FITTINGS

301.15

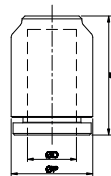
"Y" plug-in



CODE	ØD1	ØD2	ØP	B	F	Bag Qty
3011504	4	4	9	37,8	16	10
3011506	6	6	11.2	45	17,2	10
3011508	8	8	13.6	53,1	22	10
3011510	10	10	16.3	56	22,6	5
3011512	12	12	19.7	63,4	27,2	5

301.24

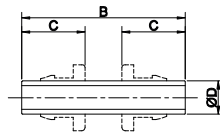
Cap



CODE	ØD	ØP	B	Bag Qty
3012404	4	9	15,6	10
3012406	6	11.2	17	10
3012408	8	13.6	19,8	10
3012410	10	16.3	21	10
3012412	12	19.7	25,4	10

301.32

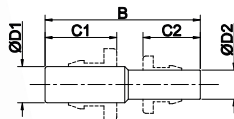
Splicer tube



CODE	ØD	B	C	Bag Qty
3013204	4	35	16	10
3013206	6	37	17	10
3013208	8	39,5	18,5	10
3013210	10	46	21	10
3013212	12	50	22,5	5

301.31

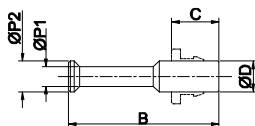
Splicer tube reducer



CODE	ØD1	ØD2	B	C1	C2	Bag Qty
301310604	6	4	36	17	16	10
301310804	8	4	38	18,9	18	10
301310806	8	6	39	18,5	17	10
301311006	10	6	42	21,9	19	10
301311008	10	8	43	21	18,5	10
301311208	12	8	45	23,9	20	10
301311210	12	10	48	22,5	21	10

301.33

Plug



CODE	ØD	B	ØP1	ØP2	C	Bag Qty
3013304	4	28	3	4	16	10
3013306	6	32	4	6	17	10
3013308	8	39	5	8	18,5	10
3013310	10	42	8	10	21	10
3013312	12	44	8	12	22,5	10

AIR PREPARATION

VALVES

CYLINDERS

FITTINGS

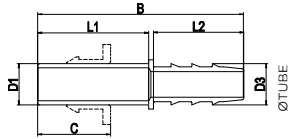
WATER PREPARATION

LINE 301 | PUSH-IN INTERMEDIATE FITTINGS

AIR PREPARATION

301.63

Extended plug-in



CODE	ØD1	Øtube	ØD3	B	C	L1	L2	Bag Qty
301630404	4	4	5,9	36	16	18	17	10
301630606	6	6	7,9	41	17	23	17	10
301630806	8	6	7,9	43	18,5	25	17	10
301630808	8	8	10	48,2	18,5	25	22	10
301631008	10	8	10	50,2	21	27	22	10
301631208	12	8	10	54,2	22,5	31	22	10
301631210	12	10	12	54,7	22,5	31	22,5	10

VALVES

CYLINDERS

301.67

Push-in cartridge

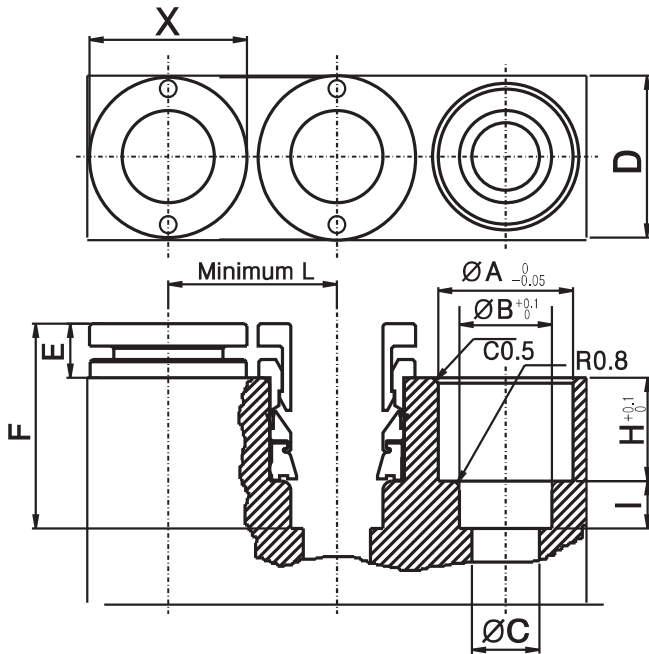


CODE	Ø	ØA	ØB	ØC	D	E	F	H	I	L	X	Bag Qty
3016704	4	8.1	4.2	2.5	11	4.7	16	7.8	3.5	11	10	100
3016706	6	10	6.2	4	13	5	17.2	8.2	4	13	12	100
3016708	8	12	8.2	6	15	4.8	18.2	9.2	4.5	15	14	100
3016710	10	15.1	10.2	8	18	5.8	21	10.2	5	18	17	10
3016712	12	17.7	12.2	10	22	5.2	22.4	12.2	5	22	21	50

*Attention: dimensions for technopolymer seat

FITTINGS

WATER PREPARATION



LINE 321-322 | SPEED CONTROLLERS



AIR PREPARATION

VALVES

CYLINDERS

FITTINGS

WATER PREPARATION

TECHNICAL DATA

Applications	compressed air/vacuum
Fluid	air (no other gases or liquids)
Working pressure	0 - 10 bar
Vacuum	-0,5 bar
Temperature range	0 ÷ 60°C
Recommended hoses	Nylon, Polyurethane

GUIDE TO REFERENCES

321 01 06 18

Line

- 321** Tapered - In line speed controller
- 322** Parallel speed controller

Type

Please check it in following pages

Thread Size

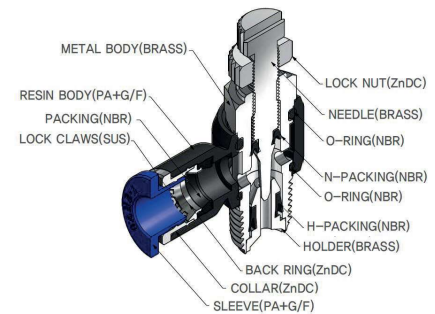
- 18** = 1/8
- 14** = 1/4
- 38** = 3/8
- 12** = 1/2
- M5** = M5

Ø Tube

- 04** = 4 mm tube
- 06** = 6 mm tube
- 08** = 8 mm tube
- 10** = 10 mm tube
- 12** = 12 mm tube

Model	Speed con.
For cylinder (out)	
For Valve (in)	
U/directional in line	
Bidirectional in line	

Structural Diagram

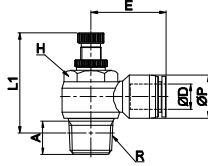


LINE 321-322 | PARALLEL AND TAPERED SPEED CONTROLLERS

AIR PREPARATION

321.01

Tapered elbow speed controller (with red sleeve)



CODE	ØD	R	ØP	A	L1 (max)	E	H	Bag Qty
321010418	4	G1/8	10	7	36,3	20,2	10	10
321010414		G1/4	10	10	43,7	23,2	14	10
321010618	6	G1/8	12,4	7	36,6	22,1	14	10
321010614		G1/4	12,4	10	43,7	24,2	14	10
321010818	8	G1/8	14,4	7	36,6	23,7	14	10
321010814		G1/4	14,4	10	43,7	26,9	14	10
321010838	10	G3/8	14,4	12,5	48,3	27,3	19	5
321011014		G1/4	17,6	10	43,7	29,1	14	5
321011038	12	G3/8	17,6	12,5	48,3	29,5	19	5
321011012		G1/2	17,6	15,5	47,8	32,4	24	5
321011238	12	G3/8	21	12,5	48,3	34,7	19	5
321011212		G1/2	21	15,5	47,8	34,7	24	5

VALVES

321.02

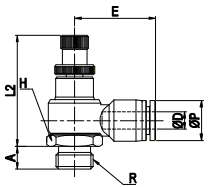
Tapered elbow speed controller (with black sleeve)

CODE	ØD	R	ØP	A	L1 (max)	E	H	Bag Qty
321.02.04.18	4	G1/8	10	7	36,3	20,2	10	10
321.02.06.18	6	G1/8	12,4	7	36,6	22,1	10	10
321.02.08.18	8	G1/8	14,4	7	36,6	23,7	14	10
321.02.08.14		G1/4	14,4	10	43,7	26,9	14	10
321.02.10.38	10	G3/8	17,6	12,5	48,3	29,5	19	5
321.02.12.12	12	G1/2	21	15,5	47,8	34,7	24	5

CYLINDERS

322.01

Parallel elbow speed controller (with red sleeve)



CODE	ØD	R	ØP	A	L2	E	H	Bag Qty
3220104M5	4	M5	10	3,5	26,5	18,5	8	10
322010418		G1/8	10	6	36,3	20,2	14	10
322010414		G1/4	10	8	43,7	23,2	17	10
3220106M5	6	M5	12,4	3,5	26,5	18,5	8	10
322010618		G1/8	12,4	6	36,6	22,1	14	10
322010614		G1/4	12,4	8	43,7	24,2	17	10
322010818	8	G1/8	14,4	6	36,6	23,7	14	10
322010814		G1/4	14,4	8	43,7	26,9	17	10
322010838		G3/8	14,4	10	48,3	27,3	20	5
322011014	10	G1/4	17,6	8	43,7	29,1	17	5
322011038		G3/8	17,6	10	48,3	29,5	20	5
322011012		G1/2	17,6	12	47,8	32,4	24	5
322011238	12	G3/8	21	10	48,3	34,7	20	5
322011212		G1/2	21	12	47,8	34,7	24	5

FITTINGS

322.02

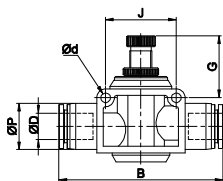
Parallel elbow speed controller (with black sleeve)

CODE	ØD	R	ØP	A	L2	E	H	Bag Qty
3220204M5	4	M5	10	3,5	26,5	18,5	8	10
322020418		G1/8	10	6	36,3	20,2	14	10
3220206M5	6	M5	12,4	3,5	26,5	18,5	8	10
322020618		G1/8	12,4	6	36,6	22,1	14	10
322020818	8	G1/8	14,4	6	36,6	23,7	14	10
322020814	8	G1/4	14,4	8	43,7	26,9	17	10
322021038	10	G3/8	17,6	10	48,3	29,5	20	10
322021212	12	G1/2	21	12	47,8	34,7	24	5

LINE 321-322 | IN LINE SPEED CONTROLLER

321.05 - 321.06

In line speed controller



321.05 IN LINE UNIDIRECTIONAL VERSION

CODE	ØD	ØP	B	Ød	G	J	Bag Qty
3210504	4	10	38,4	3,2	13,5	14	10
3210506	6	12,4	47,2	4,3	18,5	20	5
3210508	8	14,4	51,8	4,3	19	22	5
3210510	10	17,6	59,6	4,3	23	26	5
3210512	12	21	71,4	4,3	20,5	32	4

321.06 IN LINE BIDIRECTIONAL VERSION

CODE	ØD	ØP	B	Ød	G	J	Bag Qty
3210604	4	10	38,4	3,2	13,5	14	10
3210606	6	12,4	47,2	4,3	18,5	20	5
3210608	8	14,4	51,8	4,3	19	22	5
3210610	10	17,6	59,6	4,3	23	26	5
3210612	12	21	71,4	4,3	20,5	32	4

AIR PREPARATION

VALVES

CYLINDERS

FITTINGS

WATER PREPARATION

LINE 341 | 3 WAYS HAND VALVES

AIR PREPARATION

VALVES

CYLINDERS

FITTINGS

WATER PREPARATION



TECHNICAL DATA

Applications

compressed air/vacuum

Fluid

air (no other gases or liquids)

Working pressure

0 - 10 bar

Vacuum

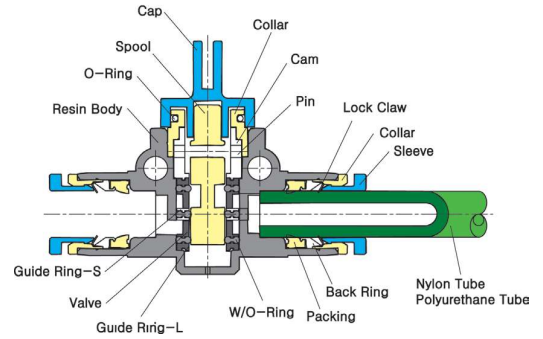
- 0,5 bar

Temperature range

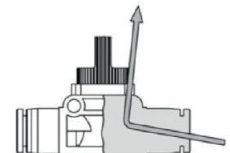
0 ÷ 60°C

Recommended hoses

Nylon, Polyurethane

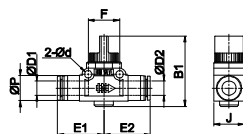


The 3 ways hand valves of the 341 line have the function to close the air flow input and to release the downstream circuit. There are available with intermediate version (hose/hose) and with thread connections.



341.04

Straight union hand valve



CODE	ØD1	ØD2	ØP	E1	E2	Ød	B1	F	Bag Qty
341040606	6	6	12,4	25,2	25,2	4,2	40,5	18,1	50
341040808	8	8	14,4	27,7	27,7	4,2	40,5	20	50
341041010	10	10	17,6	31,4	31,4	4,2	40,4	24,4	25
341041212	12	12	21	34,3	34,3	4,2	40,4	24,4	20

LINE 351-352 | BALL VALVES



AIR PREPARATION

VALVES

CYLINDERS

FITTINGS

WATER PREPARATION

TECHNICAL DATA

Applications

compressed air/vacuum

Fluid

air (no other gases or liquids)

Working pressure

0 - 10 bar

Vacuum

- 0,5 bar

Temperature range

0 ÷ 60°C

Recommended hoses

Nylon, Polyurethane

The ball valves of the 351/352 lines have been studied in order to render elegant, ergonomic and particularly versatile this common cutoff circuit accessory.

GUIDE TO REFERENCES

351 01 06 18

Line

351 Ball valve

352 Metal ball valve

Type

Please check it in following pages

Thread Size

18 = 1/8

14 = 1/4

38 = 3/8

12 = 1/2

M5 = M5

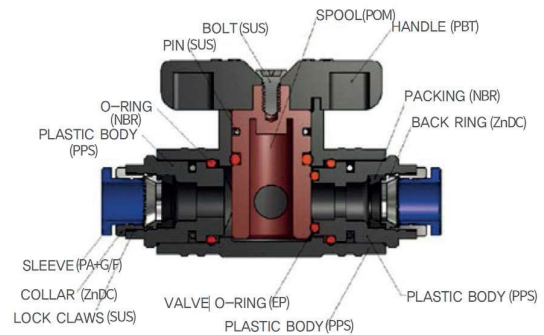
Ø Tube diameter

06 = 6 mm tube

08 = 8 mm tube

10 = 10 mm tube

12 = 12 mm tube

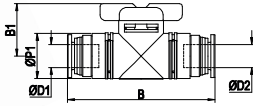


LINE 351-352 | BALL VALVES

AIR PREPARATION

351.01

Union ball valve

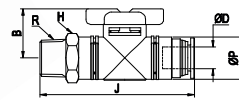


CODE	ØD1	ØD2	ØP	B	B1	Bag Qty
351010606	6	6	17	59,4	23	5
351010808	8	8	17	59,2	23	5
351011010	10	10	24	78,4	28	4
351011212	12	12	24	79,3	28	4

VALVES

351.03

Straight ball valve

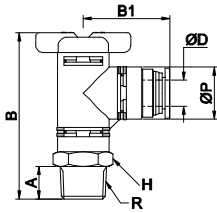


CODE	ØD	R	ØP	H	J	B	Bag Qty
351030618	6	G1/8	17	17	60,4	23	5
351030614		G1/4	17	17	63,4	23	5
351030818	8	G1/8	17	17	60,3	23	5
351030814		G1/4	17	17	63,3	23	5
351030838	10	G3/8	17	17	64,3	23	5
351031014		G1/4	24	24	82,4	28	4
351031038	12	G3/8	24	24	83,4	28	4
351031012		G1/2	24	24	87,4	28	4
351031238	12	G3/8	24	24	83,85	28	4
351031212		G1/2	24	24	87,85	28	4

CYLINDERS

351.06

Elbow ball valve

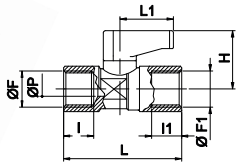


CODE	ØD	R	ØP	A	H	B	B1	Bag Qty
351060618	6	G1/8	17	8	17	53,75	29,75	5
351060614		G1/4	17	11	17	56,75	29,75	5
351060818	8	G1/8	17	8	17	53,75	30,25	5
351060814		G1/4	17	11	17	56,75	30,25	5
351060838	10	G3/8	17	12	17	57,75	30,25	5
351061014		G1/4	24	11	24	72,1	40,1	4
351061038	12	G3/8	24	12	24	73,1	40,1	4
351061012		G1/2	24	15	24	77,1	40,1	4
351061238	12	G3/8	24	12	24	73,1	40	4
351061212		G1/2	24	15	24	77,1	40	4

FITTINGS

352.07

Female ball valve

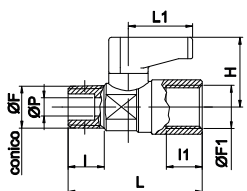


CODE	F	F1	P	I	I1	L	L1	H	CH	Bag Qty
352071818	1/8	1/8	5,5	8	8	36,5	19	21,5	14	5
352071414	1/4	1/4	5,5	11	11	43	19	21,5	14	5
352073838	3/8	3/8	7	11,5	16	48	19	22,5	18	2
352071212	1/2	1/2	10	16	23	59	25	32	22	2

WATER PREPARATION

352.08

M/F ball valve



CODE	F	F1	P	I	I1	L	L1	H	CH	Bag Qty
352081818	1/8	1/8	5,5	8	8	35,5	19	21,5	14	5
352081414	1/4	1/4	5,5	11	11	40,5	19	21,5	14	5
352083838	3/8	3/8	7	13	16	48	19	22,5	18	2
352081212	1/2	1/2	10	17	23	58	25	32	22	2

LINE 331-361 | AUXILIARY VALVES



AIR PREPARATION

VALVES

CYLINDERS

FITTINGS

WATER PREPARATION

TECHNICAL DATA

Applications

compressed air

Fluid

air (no other gases or liquids)

Working pressure

mod. 361
min. 0,5 bar - max 10 bar

mod. 331
min. 0,1 bar - max 12 bar

Temperature range

mod. 361
-20°C / +80°C

mod. 331
0 - 60°C

Recommended hoses

Nylon, Polyurethane

GUIDE TO REFERENCES

331 01 04 18

Line

331 Check valve

361 Quick exhaust valve

Type

Please check it in following pages

Thread Size

18 = 1/8

14 = 1/4

38 = 3/8

12 = 1/2

34 = 3/4

Ø Tube

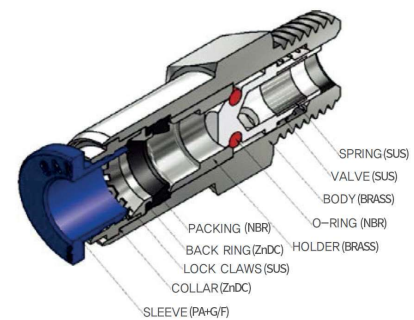
04 = 4 mm tube

06 = 6 mm tube

08 = 8 mm tube

10 = 10 mm tube

12 = 12 mm tube

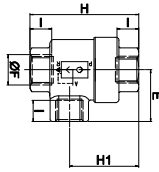


LINE 331-361 | AUXILIARY VALVES

AIR PREPARATION

361.01

Quick exhaust valve

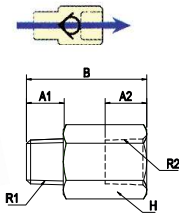


CODE	F	I	H	H 1	CH	CH 1	E	Bag Qty
3610118	1/8	8	42	28	14	14	19,5	5
3610114	1/4	11	53	34,5	19	19	25	2
3610138	3/8	12	58	36	21	21	26	2
3610112	1/2	14	71	44	26	26	35	2
3610134	3/4	18	86	52	32	32	38,5	2

VALVES

331.03

M/F check valve

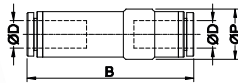


CODE	R1	R2	H	A1	A2	B	Bag Qty
331031818	1/8	1/8	14	6	9	22,8	10
331031414	1/4	1/4	17	8	11	28,5	10
331033838	3/8	3/8	24	10	13	54,3	5
331031212	1/2	1/2	27	12	16	63,1	5

CYLINDERS

331.05

Straight union check valve



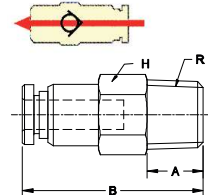
CODE	ØD	ØP	B	Bag Qty
331050404	4	10	41,1	10
331050606	6	12,4	47,2	10
331050808	8	14,4	51,6	10
331051010	10	25	77,3	5
331051212	*12	25	80	5

* For diameter 12 the body is in aluminium

FITTINGS

331.01

Tapered check "out" valve



CODE	ØD	R	H	ØP	B	A	Bag Qty
331010418	4	1/8"	10	9,6	24,7	8	10
331010618	6	1/8	12	11,6	28,6	8	10
331010614	6	1/4	14	11,6	28,6	11	10
331010818	8	1/8	14	13,6	30,5	8	10
331010814	8	1/4	14	13,6	35,1	11	10
331011038	10	3/8	24	25	62,2	12	5
331011238	12	3/8	24	25	64,4	12	5
331011212	12	1/2	27	28	70,5	15	5

WATER PREPARATION

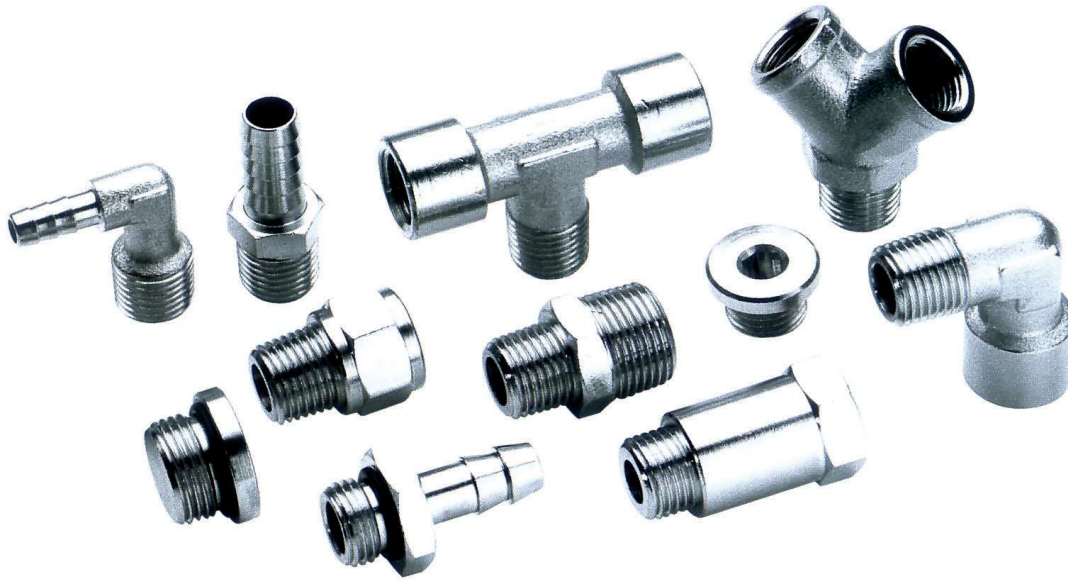
331.02

Tapered check "in" valve



CODE	ØD	R	H	ØP	B	A	Bag Qty
331020418	4	1/8"	10	9,6	24,7	8	10
331020618	6	1/8	12	11,6	28,6	8	10
331020614	6	1/4	14	11,6	28,6	11	10
331020818	8	1/8	14	13,6	30,5	8	10
331020814	8	1/4	14	13,6	35,1	11	10
331021038	10	3/8	24	25	62,2	12	10
331021238	12	3/8	24	25	64,4	12	5
331021212	12	1/2	27	28	70,5	15	5

LINE 311 | STANDARD FITTINGS



AIR PREPARATION

VALVES

CYLINDERS

FITTINGS

WATER PREPARATION

TECHNICAL DATA

Applications

Pneumatic and hydraulic systems

Working pressure

60 bar

Vacuum

-

Temperature range

-10 ÷ 70°C

The traditional fittings line have a large products range in order to meet the most varied application needs.

GUIDE TO REFERENCES

311 01 - -

Line

311 Standard fittings

Type

Please check it in the following pages

Thread Size

18 = 1/8

14 = 1/4

38 = 3/8

12 = 1/2

M5 = M5

Ø Tube

06 = 6 mm tube

07 = 7 mm tube

08 = 8 mm tube

09 = 9 mm tube

10 = 10 mm tube

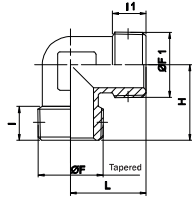
12 = 12 mm tube

LINE 311 | STANDARD FITTINGS

AIR PREPARATION

311.01

Tapered elbow male

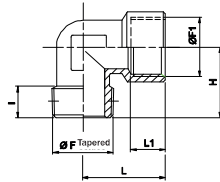


CODE	F	F1	I	I1	H	L	CH	Bag Qty
3110118	1/8	1/8	8	8	18,5	18,5	10	20
3110114	1/4	1/4	11	11	23,5	23,5	13	10
311011418	1/4	1/8	11	8	21,5	19	10	20
3110138	3/8	3/8	11,5	11,5	26	26	17	10
3110112	1/2	1/2	14	14	31	31	21	5

VALVES

311.02

M/F tapered elbow

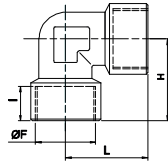


CODE	F	F1	I	I1	H	L	CH	Bag Qty
3110218	1/8	1/8	8	8	18,5	21	10	20
3110214	1/4	1/4	11	11	23,5	25,5	13	10
311021418	1/4	1/8	11	8	21,5	21	10	20
3110238	3/8	3/8	11,5	11,5	26	28	17	5
3120112	1/2	1/2	14	14	31	33,5	21	5

CYLINDERS

311.03

F/F tapered elbow

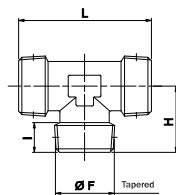


CODE	F	I	H	L	CH	Bag Qty
3110318	1/8	8	21	21	10	20
3110314	1/4	11	25,5	25,5	13	10
3110338	3/8	11,5	28	28	17	5

FITTINGS

311.04

"T" tapered male

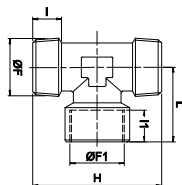


CODE	F	I	H	L	CH	Bag Qty
3110418	1/8	8	18,5	37	10	10
3110414	1/4	11	23,5	47	13	5
3110438	3/8	11,5	26	52	17	5
3110412	1/2	14	31	62	21	5

WATER PREPARATION

311.05

"T" tapered M/F/M

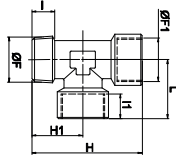


CODE	F	F1	I	I1	H	L	CH	Bag Qty
3110518	1/8	1/8	8	8	37	21	10	10
3110514	1/4	1/4	11	11	47	25,5	13	5
3110538	3/8	3/8	11,5	11,5	52	28	17	5
3110412	1/2	14	31	62	21	5	21	5

LINE 311 | STANDARD FITTINGS

311.06

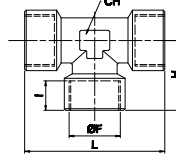
"T" tapered M/F/F



CODE	F	F1	I	I1	H	H1	L	CH	Bag Qty
3110618	1/8	1/8	8	8	39,5	18,5	21	10	10
3110614	1/4	1/4	11	11	49	23,5	25,5	13	5
3110638	3/8	3/8	11,5	11,5	54	26	28	17	5
3110612	1/2	1/2	14	14	64,5	31	33,5	21	5

311.07

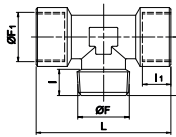
"T" tapered female



CODE	F	I	H	L	CH	Bag Qty
3110718	1/8	8	21	42	10	10
3110714	1/4	11	25,5	51	13	5
3110738	3/8	11,5	28	56	17	5
3110712	1/2	14	33,5	67	21	5

311.08

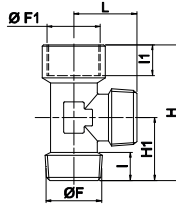
"T" tapered F/M/F



CODE	F	F1	I	I1	H	L	CH	Bag Qty
3110818	1/8	1/8	8	8	18,5	42	10	10
3110814	1/4	1/4	11	11	23,5	51	13	5
3110838	3/8	3/8	11,5	11,5	26	56	17	5
3110812	1/2	1/2	14	14	31	67	21	5

311.09

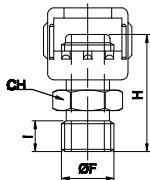
"T" tapered F/M/M



CODE	F	F1	I	I1	H	H1	L	CH	Bag Qty
3110918	1/8	1/8	8	8	39,5	18,5	18,5	10	10
3110914	1/4	1/4	11	11	49	23,5	23,5	13	5
3110938	3/8	3/8	11,5	11,5	54	26	26	17	5
3110912	1/2	1/2	14	14	64,5	31	31	21	5

311.36

Milled fitting nut



CODE	F	I	H	CH	Bag Qty
3113614	1/4	10	28,5	15	10

AIR PREPARATION

VALVES

CYLINDERS

FITTINGS

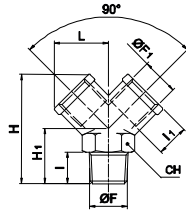
WATER PREPARATION

LINE 311 | STANDARD FITTINGS

AIR PREPARATION

311.10

"Y" tapered F/M/F

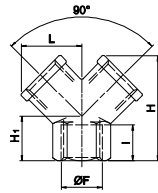


CODE	F	F1	I	I1	H1	L	H	CH	Bag Qty
3111018	1/8	1/8	8	8	16	14,5	32	13	10
3111014	1/4	1/4	11	11	20	18	38	17	10
3111038	3/8	3/8	11,5	11,5	22	20,5	42,5	20	5
3111012	1/2	1/2	14	14	27	26,5	53	25	5

VALVES

311.11

"Y" female

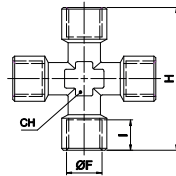


CODE	F	I	H1	L	H1	CH	Bag Qty
3111118	1/8	8	12	14,5	26,5	13	10
3111114	1/4	11	14	18	32	17	10
3111138	3/8	11,5	16	20,5	37	20	5
3111112	1/2	14	19	26,5	45	25	5

CYLINDERS

311.13

Female cross

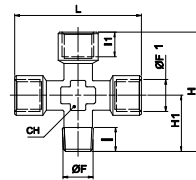


CODE	F	I	H	CH	Bag Qty
3111318	1/8	8	42	10	10
3111314	1/4	11	51	13	5
3111338	3/8	11,5	56	17	5
3111312	1/2	14	67	21	2

FITTINGS

311.12

M/F/F/F tapered cross

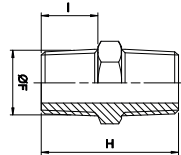


CODE	F	F1	I	I1	H	H1	L	CH	Bag Qty
3111218	1/8	1/8	8	8	39,5	18,5	42	10	10
3111214	1/4	1/4	11	11	49	23,5	51	13	5
3111238	3/8	3/8	11,5	11,5	54	26	56	17	5
3111212	1/2	1/2	14	14	64,5	31	67	21	2

WATER PREPARATION

311.14

Tapered male nipple

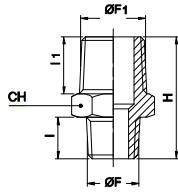


CODE	F	I	H	CH	Bag Qty
3111418	1/8	8	20,5	12	20
3111414	1/4	11	27	14	20
3111438	3/8	11,5	28	17	10
3111412	1/2	14	33,5	22	5
3111434	3/4	16,5	39,5	27	5
3111401	1"	19	45,5	34	5

LINE 311 | STANDARD FITTINGS

311.16

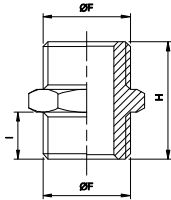
Tapered reduction male nipple



CODE	F	F1	I	I1	H	CH	Bag Qty
311161814	1/8	1/4	8	11	24	14	20
311161438	1/4	3/8	11	11,5	27,5	17	10
311161412	1/4	1/2	11	14	30,5	22	10
311163812	3/8	1/2	11,5	14	31	22	10
311161234	1/2	3/4	14	16,5	37	27	5
311163401	3/4	1"	16,5	19	42,5	34	5

311.15

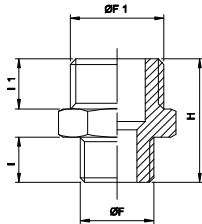
Parallel male nipple



CODE	F	I	H	CH	Bag Qty
31115M5	M5	4	11,5	8	20
3111518	1/8	6	16,5	14	20
3111514	1/4	8	21	17	20
3111538	3/8	9	23	19	10
3111512	1/2	10	25,5	24	10

311.17

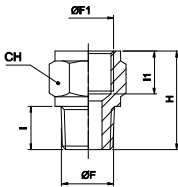
Parallel reduction male nipple



CODE	F	F1	I	I1	H	CH	Bag Qty
31117M518	M5	1/8	4	6	14,5	14	20
311171814	1/8	1/4	6	8	19	17	20
311171838	1/8	3/8	6	9	20	19	20
311171438	1/4	3/8	8	9	22	19	10
311171412	1/4	1/2	8	10	23,5	24	10
311173812	3/8	1/2	9	10	24,5	24	10
311171234	1/2	3/4	10	11	27,5	30	5
311173401	3/4	1"	12	11	32	36	5

311.18

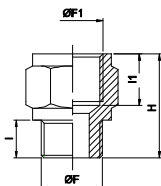
M/F tapered reducer



CODE	F	F1	I	I1	H	CH	Bag Qty
311181818	1/8	1/8	8	8	18	14	20
311181814	1/8	1/4	8	11	21,5	17	20
311181414	1/4	1/4	11	11	24,5	17	10
311181438	1/4	3/8	11	11,5	25,5	22	10
311181412	1/4	1/2	11	14	29	24	5
311183838	3/8	3/8	11,5	11,5	26	22	10
311183812	3/8	1/2	11,5	14	29,5	24	5
311181212	1/2	1/2	14	14	32	26	5

311.19

M/F parallel reducer



CODE	F	F1	I	I1	H	CH	Bag Qty
311191818	1/8	1/8	6	8	16	14	20
311191814	1/8	1/4	6	11	19,5	17	20
311191414	1/4	1/4	8	11	21,5	17	20
311191438	1/4	3/8	8	11,5	22,5	22	20
311191412	1/4	1/2	8	14	26	24	10
311193838	3/8	3/8	9	11,5	23,5	22	10
311193812	3/8	1/2	9	14	27	24	10
311191212	1/2	1/2	10	14	28	26	5

AIR PREPARATION

VALVES

CYLINDERS

FITTINGS

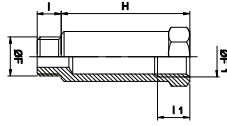
WATER PREPARATION

LINE 311 | STANDARD FITTINGS

AIR PREPARATION

311.20

M/F parallel extension

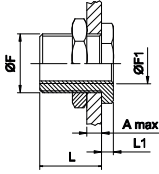


CODE	F	F1	I	I1	H	L	CH	Bag Qty
311201818	1/8	1/8	6	8	16	22	14	20
3112018181	1/8	1/8	6	8	45	51	14	10
3112018180	1/8	1/8	6	8	36	42	14	10
311201414	1/4	1/4	8	11	27	35	17	10
3112014141	1/4	1/4	8	11	43	51	17	5

VALVES

311.21

F/F bulkhead

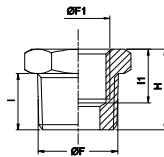


CODE	F	F1	Amax	L	L1	CH	CH1	Bag Qty
31121M5	M10X1	M5	7	10,5	3,5	14	14	10
3112118	M16X1,5	1/8	10	14	4	19	22	10
3112114	M20X1,5	1/4	16	21	4	24	27	5
3112138	M26X1,5	3/8	15	21	5	30	32	5
3112112	M28X1,5	1/2	21	27	6	32	36	5

CYLINDERS

311.22

M/F tapered reducer

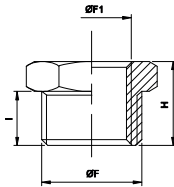


CODE	F	F1	I	I1	H	CH	Bag Qty
311221418	1/4	1/8	11	8	16	14	20
311223818	3/8	1/8	11,5	8	16,5	17	20
311223814	3/8	1/4	11,5	11	16,5	17	20
311221218	1/2	1/8	14	8	19,5	22	10
311221214	1/2	1/4	14	11	19,5	22	10
311221238	1/2	3/8	14	11,5	19,5	22	10
311223412	3/4	1/2	16,5	14	23	27	5

FITTINGS

311.23

M/F parallel reducer

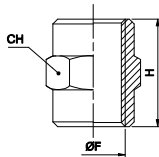


CODE	F	F1	I	H	CH	Bag Qty
3112318M5	1/8	M5	6	10,5	14	20
311231418	1/4	1/8	8	13	17	20
311233818	3/8	1/8	9	14	19	20
311233814	3/8	1/4	9	14	19	20
311231218	1/2	1/8	10	15,5	24	10
311231214	1/2	1/4	10	15,5	24	10
311231238	1/2	3/8	10	15,5	24	10
311233412	3/4	1/2	11	17,5	30	5

WATER PREPARATION

311.24

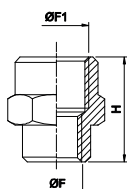
F/F sleeve



CODE	F	H	CH	Bag Qty
31124M5	M5	11	8	20
3112418	1/8	15	14	20
3112414	1/4	22	17	20
3112438	3/8	23	22	10
3112412	1/2	28	26	10
3112434	3/4	32	32	5

311.25

F/F sleeve reducer

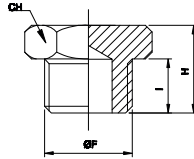


CODE	F	F1	H	CH	Bag Qty
31125M518	M5	1/8	13,5	14	10
311251814	1/8	1/4	19	17	10
311251838	1/8	3/8	20	22	10
311251438	1/4	3/8	22,5	22	10
311251412	1/4	1/2	26	24	10
311253812	3/8	1/2	26	24	10

LINE 311 | STANDARD FITTINGS

311.26

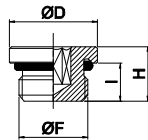
Male plug



CODE	F	I	H	CH	Bag Qty
3112618	1/8	6	10	14	20
3112614	1/4	8	12,5	17	20
3112638	3/8	9	13,5	19	20
3112612	1/2	10	15,5	24	10

311.28

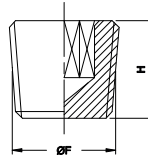
Parallel male plug with o-ring



CODE	F	I	H	D	CH	Bag Qty
3112818	1/8	6,5	9,5	14	5	20
3112814	1/4	8	11,5	17	6	20
3112838	3/8	9	12,5	20	8	20
3112812	1/2	10	14	26	10	10

311.29

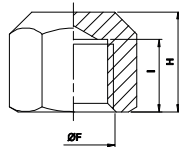
Tapered brass male plug



CODE	F	H	CH	Bag Qty
3112918	1/8	7,5	5	20
3112914	1/4	10	6	20
3112938	3/8	11	8	20
3112912	1/2	13	10	10

311.30

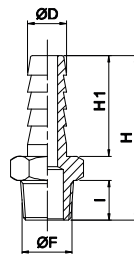
Plug female



CODE	F	I	H	CH	Bag Qty
3113018	1/8	8	11,5	14	20
3113014	1/4	11	15	17	20
3113038	3/8	11,5	15,5	20	10
3113012	1/2	14	20	24	10

311.31

Tapered male hose



CODE	D	F	I	H	H1	CH	Bag Qty
311310618	6	1/8	8	31,5	19	12	20
311310614	6	1/4	11	35	19	14	20
311310718	7	1/8	8	31,5	19	12	20
311310714	7	1/4	11	35	19	14	20
311310818	8	1/8	8	31,5	19	12	20
311310814	8	1/4	11	35	19	14	20
311310918	9	1/8	8	31,5	19	12	20
311310914	9	1/4	11	35	19	14	20
311310938	9	3/8	11,5	35,5	19	17	20
311310912	9	1/2	14	38,5	19	22	10
311311014	10	1/4	11	36	20	14	20
311311038	10	3/8	11,5	36,5	20	17	20
311311012	10	1/2	14	39,5	20	22	20
311311238	12	3/8	11,5	36,5	20	17	10
311311212	12	1/2	14	39,5	20	22	10

AIR PREPARATION

VALVES

CYLINDERS

FITTINGS

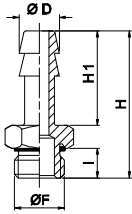
WATER PREPARATION

LINE 311 | STANDARD FITTINGS

AIR PREPARATION

311.32

Parallel male hose with o-ring



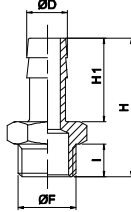
CODE	D	F	I	H	H1	CH	Bag Qty
311320618	6	1/8	6,5	30	19	14	20
311320614	6	1/4	8	32	19	17	20
311320718	7	1/8	6,5	30	19	14	20
311320714	7	1/4	8	32	19	17	20
311320818	8	1/8	6,5	30	19	14	20
311320814	8	1/4	8	32	19	17	20
311320918	9	1/8	6,5	30	19	14	20
311320914	9	1/4	8	32	19	17	20
311320938	9	3/8	9	33	19	20	20
311321214	12	1/4	8	33	20	17	10
311321238	12	3/8	9	34	20	20	10
311321212	12	1/2	10	35,5	20	24	10

VALVES

CYLINDERS

311.33

Parallel male hose



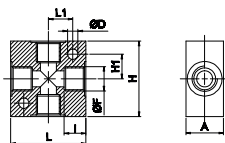
CODE	D	F	I	H	H1	CH	Bag Qty
311330618	6	1/8	6	29,5	19	12	20
311330614	6	1/4	8	32	19	14	20
311330718	7	1/8	6	29,5	19	12	20
311330714	7	1/4	8	32	19	14	20
311330818	8	1/8	6	29,5	19	12	20
311330814	8	1/4	8	32	19	14	20
311330838	8	3/8	9	33	19	19	20
311330914	9	1/4	8	32	19	14	20
311330938	9	3/8	9	33	19	19	20
311331014	10	1/4	8	33	20	14	20
311331038	10	3/8	9	34	20	19	20
311331214	12	1/4	8	33	20	14	20
311331238	12	3/8	9	34	20	19	10
311331212	12	1/2	10	35,5	20	22	10

FITTINGS

WATER PREPARATION

311.34

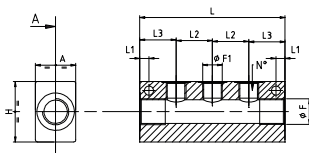
Cross manifold



CODE	F	I	H	H1	L	L1	D	A	Bag Qty
3113418	1/8	8	25	8,5	25	8,5	4,5	16	10
3113414	1/4	11	40	13	40	13	5,5	20	5
3113438	3/8	11,5	50	17	50	17	5,5	25	2
3113412	1/2	14	50	17	50	17	5,5	30	2

311.35

Multiple out-put 1 side manifold

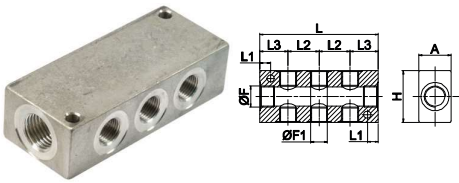


CODE	F	F1	A	H	L1	L2	L3	L	N°	Bag Qty
311351402	1/4	1/8	20	30	4,5	18	18	54	2	2
311351403	1/4	1/8	20	30	4,5	18	18	72	3	2
311351404	1/4	1/8	20	30	4,5	18	18	90	4	2
311351405	1/4	1/8	20	30	4,5	18	18	108	5	2
311353802	3/8	1/4	25	40	8,5	24	22	68	2	2
311353803	3/8	1/4	25	40	8,5	24	22	92	3	2
311353804	3/8	1/4	25	40	8,5	24	22	116	4	2
311353805	3/8	1/4	25	40	8,5	24	22	140	5	2

LINE 311 | STANDARD FITTINGS

311.36

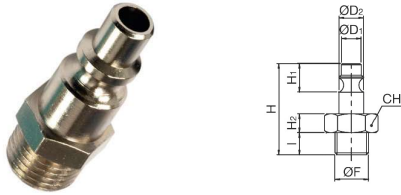
Multiple out-put 2 side manifold



CODE	F	F1	A	H	L1	L2	L3	L	N°	Bag Qty
311361402	1/4	1/8	20	30	4,5	18	18	54	2+2	2
311361403	1/4	1/8	20	30	4,5	18	18	72	3+3	2
311361404	1/4	1/8	20	30	4,5	18	18	90	4+4	2
311361405	1/4	1/8	20	30	4,5	18	18	108	5+5	2
311363802	3/8	1/4	25	40	8,5	24	22	68	2+2	2
311363803	3/8	1/4	25	40	8,5	24	22	92	3+3	2
311363804	3/8	1/4	25	40	8,5	24	22	116	4+4	2
311363805	3/8	1/4	25	40	8,5	24	22	140	5+5	2

311.38.01

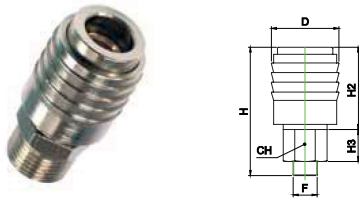
Male quick coupling "Italy" series



CODE	F	I	H	H1	H2	D1	D2	CH
311380114	1/4	8	37	14	5	7,5	12	14
311380138	3/8	8	37	14	5	7,5	12	17

311.38.02

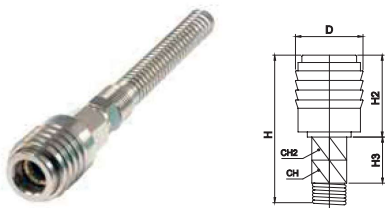
Thread quick coupling "Italy" series



CODE	F	H	H1	H2	D	CH
311380214	1/4	51	25	13	22,7	15
311380238	3/8	45	25	5	22,7	17
311380212	1/2	47	25	7	22,7	21

311.38.03

Spring quick coupling "Italy" series



CODE	F	H	H1	H2	D	CH	CH1
311380308	8x6	138	a25	23,5	22,7	15	13
311380310	10x8	138	25	23,5	22,7	15	15
311380312	12x10	140	25	23,5	22,7	15	17

AIR PREPARATION

VALVES

CYLINDERS

FITTINGS

WATER PREPARATION

LINE 312 | QUICK FITTINGS

AIR PREPARATION

VALVES

CYLINDERS

FITTINGS

WATER PREPARATION



TECHNICAL DATA

Applicazion

Pneumatic and hydraulic systems

Working pressure

vacuum + 18 bar

Temperature range

0-60°C

Recommended hoses

Nylon, Polyurethane o Rilsan

The quick fitting remains a valid alternative to the push-in fitting in the presence of severe demanding applications.

GUIDE TO REFERENCES

312 01 04 18

Line

312 Quick fitting

Type

Please check it in the following pages

Thread Size

18 = 1/8

14 = 1/4

38 = 3/8

12 = 1/2

M5 = M5

Ø Tube

04 = 4/2,7 mm tube

06 = 6/4 mm tube

08 = 8/6 mm tube

10 = 10/8 mm tube

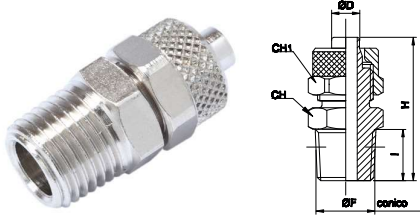
12 = 12/10 mm tube

15 = 15/12,5 mm tube

LINE 312 | QUICK FITTINGS

312.01

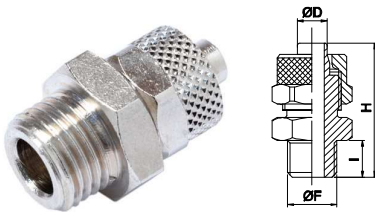
Tapered straight male



CODE	D	F	I	H	CH	CH 1	Bag Qty
312010418	4/2,7	1/8	8	23,8	12	8	10
312010518	5/3	1/8	8	25	12	8	20
312010618	6/4	1/8	8	27,5	12	12	20
312010614	6/4	1/4	11	31	14	12	10
312010638	6/4	3/8	11,5	31,5	17	12	10
312010818	8/6	1/8	8	27,5	12	14	10
312010814	8/6	1/4	11	31	14	14	10
312010838	8/6	3/8	11,5	31,5	17	14	10
312011018	10/8	1/8	8	29,5	14	16	10
312011014	10/8	1/4	11	32,5	14	16	10
312011038	10/8	3/8	11,5	33	17	16	10
312011012	10/8	1/2	14	36	22	16	5
312011238	12/10	3/8	11,5	34,5	17	18	10
312011212	12/10	1/2	14	37,5	22	18	5
312011512	15/12,5	1/2	14	39,5	22	22	5

312.02

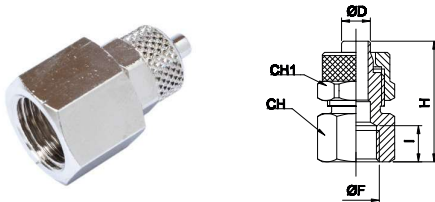
Parallel straight male



CODE	D	F	I	H	CH	CH 1	Bag Qty
3120205M5	5/3	M5	4	20	8	8	20
3120206M5	6/4	M5	4	21	8	9	20
312020518	5/3	1/8	6	23	14	8	20
312020618	6/4	1/8	6	25,5	14	12	20
312020614	6/4	1/4	8	28	17	12	20
312020638	6/4	3/8	9	29	19	12	10
312020818	8/6	1/8	6	25,5	14	14	10
312020814	8/6	1/4	8	28	17	14	10
312020838	8/6	3/8	9	29	19	14	10
312021018	10/8	1/8	6	27	14	16	10
312021014	10/8	1/4	8	29,5	17	16	10
312021038	10/8	3/8	9	30,5	19	16	10
312021012	10/8	1/2	10	32	24	16	10
312021238	12/10	3/8	9	32	19	18	10
312021212	12/10	1/2	10	33,5	24	18	5
312021512	15/12,5	1/2	10	33,5	24	22	5

312.04

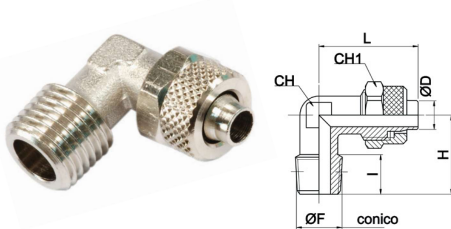
Parallel straight female



CODE	D	F	I	H	CH	CH 1	Bag Qty
312040518	5/3	1/8	8	22,5	14	8	20
312040618	6/4	1/8	8	25	14	12	20
312040614	6/4	1/4	11	29	17	12	20
312040818	8/6	1/8	8	25	14	14	20
312040814	8/6	1/4	11	29	17	14	10
312040838	8/6	3/8	11,5	29,5	20	14	10
312041018	10/8	1/8	8	26,5	14	16	10
312041014	10/8	1/4	11	30,5	17	16	10
312041038	10/8	3/8	11,5	31	20	16	10
312041012	10/8	1/2	14	34,5	24	16	10
312041238	12/10	3/8	11,5	32,5	20	18	10

312.05

Parallel straight male



CODE	D	F	I	H	L	CH	CH 1	Bag Qty
3120504M5	4/2,7	M5	4	15	19,5	8	8	10
312050418	4/2,7	1/8	8	17	19,5	8	8	10
312050518	5/3	1/8	8	17	21,5	8	8	20
312050618	6/4	1/8	8	17	22,5	8	12	20
312050614	6/4	1/4	11	20	22,5	10	12	10
312050638	6/4	3/8	11,5	22,5	23,5	11	12	10
312050818	8/6	1/8	8	17	22,5	10	14	10
312050814	8/6	1/4	11	20	22,5	10	14	10
312050838	8/6	3/8	11,5	22,5	24	11	14	10
312051018	10/8	1/8	8	18,5	25,5	11	16	10
312051014	10/8	1/4	11	21,5	25,5	11	16	10
312051038	10/8	3/8	11,5	22,5	25,5	11	16	10
312051238	12/10	3/8	11,5	24,5	30	14	18	10
312051212	12/10	1/2	14	28	30,5	17	18	5
312051512	15/12,5	1/2	14	28	34	17	22	5

AIR PREPARATION

VALVES

CYLINDERS

FITTINGS

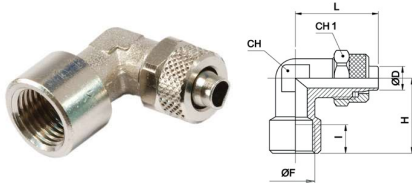
WATER PREPARATION

LINE 312 | QUICK FITTINGS

AIR PREPARATION

312.06

Parallel elbow female

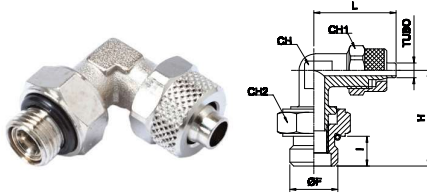


CODE	D	F	I	H	L	CH	CH 1	Bag Qty
312060518	5/3	1/8	8	19	21,5	10	8	20
312060618	6/4	1/8	8	19	22,5	10	12	20
312060614	6/4	1/4	10,5	23	25	11	12	10
312060818	8/6	1/8	8	19	22,5	10	14	20
312060814	8/6	1/4	10,5	23	25	11	14	10
312061014	10/8	1/4	11	23,5	26	13	16	10
312061238	12/10	3/8	11,5	28	30,5	17	18	5

VALVES

312.07

Swivel elbow male with o-ring

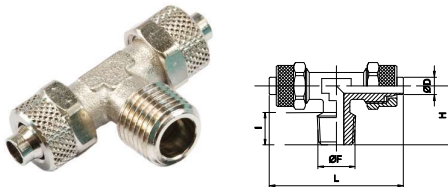


CODE	D	F	I	H	L	CH	CH 1	CH 2	Bag Qty
312070618	6/4	1/8	6	22,5	22,5	8	12	14	10
312070614	6/4	1/4	8	25	23,5	10	12	17	10
312070818	8/6	1/8	6	22,5	23,5	10	14	14	10
312070814	8/6	1/4	8	25	23,5	10	14	17	10
312071014	10/8	1/4	8	25,5	23,5	11	14	17	10

CYLINDERS

312.09

"T" tapered central male

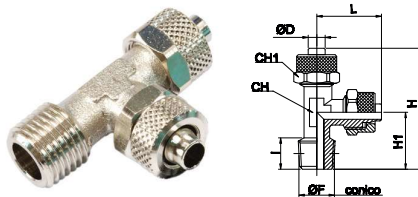


CODE	D	F	I	H	L	CH	CH 1	Bag Qty
312090518	5/3	1/8	8	17	43	8	8	20
312090618	6/4	1/8	8	17	45	8	12	10
312090614	6/4	1/4	11	20,5	45,5	10	12	10
312090818	8/6	1/8	8	17,5	45,5	10	14	10
312090814	8/6	1/4	11	20,5	45,5	10	14	10
312090838	8/6	3/8	11,5	22,5	48	11	14	10
312091014	10/8	1/4	11	21,5	51	11	16	5
312091038	10/8	3/8	11,5	22,5	51	11	16	5
312091238	12/10	3/8	11,5	24,5	60	14	18	5
312091212	12/10	1/2	14	28	61	17	18	5
312091512	15/12,5	1/2	14	28	68	17	22	5

FITTINGS

312.10

"T" tapered lateral male

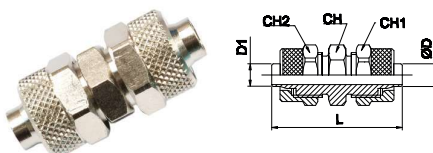


CODE	D	F	I	H	H 1	L	CH	CH 1	Bag Qty
312100518	5/3	1/8	8	38,5	17	21,5	8	8	20
312100618	6/4	1/8	8	39,5	17	22,5	8	12	10
312100614	6/4	1/4	11	42,5	20	22,5	10	12	10
312100818	8/6	1/8	8	40,5	17,5	22,5	10	14	10
312100814	8/6	1/4	11	43,5	20,5	22,5	10	14	10
312100838	8/6	3/8	11,5	46,5	22,5	23,5	11	14	10
312101014	10/8	1/4	11	46,5	21	25,5	11	16	5
312101038	10/8	3/8	11,5	48	22,5	25,5	11	16	5
312101238	12/10	3/8	11,5	54,5	24,5	30	14	18	5
312101212	12/10	1/2	14	58,5	28	30,5	17	18	5
312101512	15/12,5	1/2	14	62	28	34	17	22	5

WATER PREPARATION

312.11

Straight union

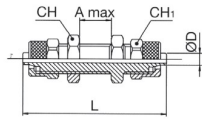


CODE	D	D 1	L	CH	CH 1	CH 2	Bag Qty
3121105	5/3	5/3	28,5	8	8	8	20
3121106	6/4	6/4	34,5	12	12	12	20
3121108	8/6	8/6	35	14	14	14	10
312110806	8/6	6/4	35	14	14	12	10
3121110	10/8	10/8	38	14	16	16	10
3121112	12/10	12/10	41	17	18	18	5
3121115	15/12,5	15/12,5	45,5	22	22	22	5

LINE 312 | QUICK FITTINGS

312.12

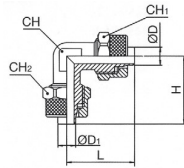
Bulkhead union



CODE	D	CH	CH 1	L	A max	Bag Qty
3121205	5/3	9	8	40	8,5	20
3121206	6/4	14	12	48	10,5	10
3121208	8/6	16	14	48	10,5	10
3121210	10/8	17	16	50	8,5	10
3121212	12/10	19	18	53	8,5	5
3121215	15/12,5	24	22	58	8,5	5

312.13

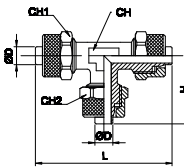
Elbow union



CODE	D	D 1	H	L	CH	CH 1	CH 2	Bag Qty
3121305	5/3	5/3	21,5	21,5	8	8	8	20
3121306	6/4	6/4	21,5	21,5	8	12	12	20
3121308	8/6	8/6	22,5	22,5	10	14	14	10
312130806	8/6	6/4	22,5	22,5	10	14	12	10
3121310	10/8	10/8	25,5	25,5	11	16	16	10
3121312	12/10	12/10	30	30	14	18	18	5
3121315	15/12,5	15/12,5	34	34	17	22	22	5

312.14

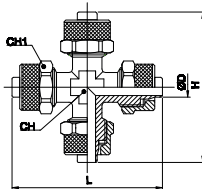
"T" union



CODE	D	D 1	H	L	CH	CH 1	CH 2	Bag Qty
3121405	5/3	5/3	21,5	43	8	8	8	20
3121406	6/4	6/4	22,5	45	8	12	12	10
3121408	8/6	8/6	22,5	45	10	14	14	10
312140806	8/6	6/4	22,5	45	10	14	12	10
3121410	10/8	10/8	25,5	51	11	16	16	5
3121412	12/10	12/10	30	60	14	18	18	5
3121415	15/12,5	15/12,5	34	68	17	22	22	5

312.16

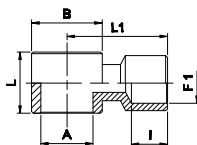
Cross union



CODE	D	H	L	CH	CH 1	Bag Qty
3121605	5/3	43	43	8	8	10
3121606	6/4	45	45	8	12	10
3121608	8/6	45	45	10	14	10
3121610	10/8	51	51	11	16	5

312.23

Female banjo



CODE	F	F 1	I	H	L	Bag Qty
3122318	1/8	1/8	8	14,5	20	10
3122314	1/4	1/4	10	17,5	24,5	10

AIR PREPARATION

VALVES

CYLINDERS

FITTINGS

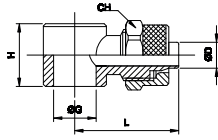
WATER PREPARATION

LINE 312 | QUICK FITTINGS

AIR PREPARATION

312.17

Single banjo

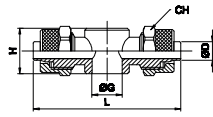


CODE	D	F	H	L	CH 1	Bag Qty
3121704M5	4/2,7	M5	9	15,8	8	10
312170418	4/2,7	1/8	14,5	21,3	8	10
3121705M5	5/3	M5	9	17	8	10
312170518	5/3	1/8	14,5	22,5	8	20
3121706M5	6/4	M5	9	18	9	20
312170618	6/4	1/8	14,5	24	12	10
312170614	6/4	1/4	14,5	26	12	10
312170818	8/6	1/8	14,5	24	14	10
312170814	8/6	1/4	14,5	26	14	10
312171014	10/8	1/4	14,5	27,5	16	10

VALVES

312.18

Double banjo

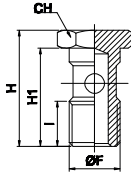


CODE	D	F	H	L	CH 1	Bag Qty
312180418	4/2,7	1/8	14,5	42,6	8	10
312180518	5/3	1/8	14,5	45	8	10
312180618	6/4	1/8	14,5	48	12	10
312180614	6/4	1/4	14,5	52	12	10
312180818	8/6	1/8	14,5	48	14	10
312180814	8/6	1/4	14,5	52	14	10
312181014	10/8	1/4	14,5	55	16	5

CYLINDERS

312.19

Single screw

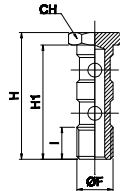


CODE	F	I	H	H 1	CH 1	Bag Qty
31219M5	M5	6	18	14,5	8	10
3121918	1/8	8	27	23	14	20
3121914	1/4	11	29,5	25	17	10

FITTINGS

312.21

Double screw

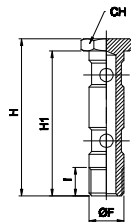


CODE	F	I	H	H 1	CH 1	Bag Qty
3122118	1/8	8	43	39	14	10
3122114	1/4	11	45,5	41	17	10

WATER PREPARATION

312.22

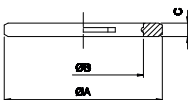
Longer double screw



CODE	F	I	H	H 1	CH 1	Bag Qty
3122218	1/8	8	56	52	14	10
3122214	1/4	11	58,5	54	17	10

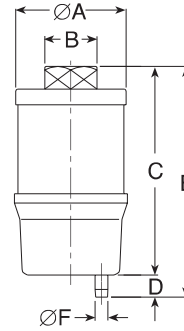
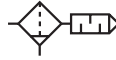
312.25

Indented nylon washer



CODE	(F)	A	B	C	Bag Qty
31225M5	M5	8	5,2	1,3	10
3122518	1/8	14	10	1,5	20
3122514	1/4	18	13,5	1,5	20

LINE D00-CONVEYOR X | SILENCERS OIL REMOVER



GENERAL FEATURES

The Oil remover/Exhaust silencer for pneumatic systems removes the oil mist pollution produced by the exhaust of valves and cylinders, which are discharged in the unit and reduces the noise pollution by 25 Dba.

Filtering element in coalescent glass fiber, having the function to capture the oil particles and convey them to the oil collection bowl. The draining plug allows connecting the collection bowl to the outside with a pipe $\varnothing 6$ mm.

* CONVEYOR - X is a disposable item and must be replaced when the back pressure exceeds 1bar or causes restrictions in the application

GENERAL TECHNICAL DATA

Fluid	compressed air
Connections	1/2, 1", 1" 1/2
Maximum operating pressure	10 bar
*Range di temperatura	2÷50°C (36÷122°F).

ORDERING CODE

CODE	PRODUCT	Connection	Portata (0,7MPa/7Bar/100Psi)		WEI- GHT
			NI/min	SCFM	
D00.00.12025	CONVEYOR-X 25	1/2"	1500	53	0,1
D00.00.10050	CONVEYOR-X 50	1"	3000	105	0,14
D00.00.15150	CONVEYOR-X 150	1 1/2"	9000	315	0,37

DIMENSIONS

CODE	Ø A	B	C	D	E	Ø F
CONVEYOR-X 25	61	ch.28	113	12	125	6
CONVEYOR-X 50	61	ch.40	161	12	173	6
CONVEYOR-X 150	86	ch.55	205	12	217	6

AIR PREPARATION

VALVES

CYLINDERS

FITTINGS

WATER PREPARATION

LINE 391 | SILENCERS

AIR PREPARATION

VALVES

CYLINDERS

FITTINGS

WATER PREPARATION



TECHNICAL DATA

Applications

exhaust compressed air

Fluid

air (no other gases or liquids)

Working pressure

mod. Brass
min. 0 bar - max 12 bar

mod. Polymer
min. 0 bar - max 5 bar

Temperature range

mod. Brass
-5°C / +80°C

mod. Polymer
-5°C / +50°C

GUIDE TO REFERENCES

391 01 18

Line

391 Silencers

Type

Please check it in the following pages

Thread Size

18 = 1/8

14 = 1/4

38 = 3/8

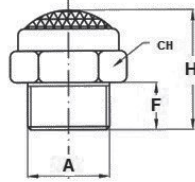
12 = 1/2

M5 = M5

LINE 391 | SILENCERS

391.01

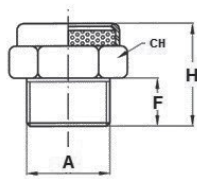
SFE silencer



CODE	A	F	H	CH	Bag Qty
39101M5	M5	4	8	8	10
3910118	1/8	6	15	13	10
3910114	1/4	7	18	16	10
3910138	3/8	8	20	19	5
3910112	1/2	10	22	24	5

391.02

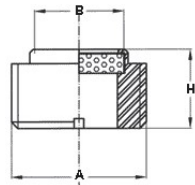
SEP silencer



CODE	A	F	H	CH	Bag Qty
39102M5	M5	5	12	8	10
3910218	1/8	6	14	13	10
3910214	1/4	7	17	16	10
3910238	3/8	8	18	19	5
3910212	1/2	10	20	24	5

391.03

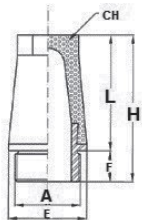
SP silencer



CODE	A	B	H	Bag Qty
3910318	1/8	6	5	10
3910314	1/4	8	6	10
3910338	3/8	10	7	5
3910312	1/2	15	8	5

391.04

SET silencer



CODE	A	E	F	L	H	CH	Bag Qty
39104M5	M5	8,5	5	15	20	7,5	10
3910418	1/8	11,5	4,5	13	17,5	8	10
3910414	1/4	15	6	18	24	10	10
3910438	3/8	19	7	24	31	13	5
3910412	1/2	23	8	29	37	14	5

AIR PREPARATION

VALVES

CYLINDERS

FITTINGS

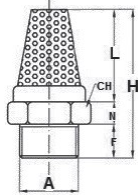
WATER PREPARATION

LINE 391 | SILENCERS

AIR PREPARATION

391.06

SBE silencer

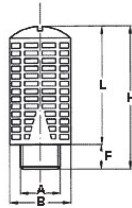


CODE	A	N	F	L	H	CH	Bag Qty
39106M5	M5	3	4	9	17	8	10
3910618	1/8	3,5	5,5	15	23	12	10
3910614	1/4	4	7	18	29	15	10
3910638	3/8	4,5	8	25	37	19	5
3910612	1/2	5,5	10	29	45	22	5

VALVES

391.08

SPL silencer



CODE	A	B	F	L	H	Bag Qty
3910818	1/8	15	6	26,5	32,5	10
3910814	1/4	19,5	8	35	43	10
3910838	3/8	24,5	11	47	58	5
3910812	1/2	24,5	11	47	58	5

CYLINDERS

391.10

PSU-silencer

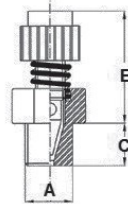


CODE	A	L	F	CH	D	Bag Qty
3911018	1/8	40	7	14	16	10
3911014	1/4	65	10,8	18	21	10
3911038	3/8	84	13	21	25	5
3911012	1/2	94	14	26	30	5

FITTINGS

391.07

SVE silencer - flow regulator

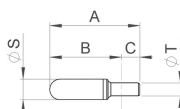


CODE	A	B min	B max	C	Bag Qty
3910718	1/8	20	22	6	5
3910714	1/4	22	24	8	5
3910738	3/8	25	28	10	5
3910712	1/2	26	29	11	5

WATER PREPARATION

1601A

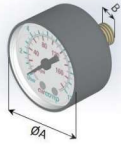
PE silencers



CODE	ØT	A	B	C	ØS
1601A00064	6	45	28,5	16,5	12,5
1601A00065	8	43	23,5	19,5	13,5
1601A00072	10	57	37	20	15,6
1601A00066	12	80	58	22	18,5

GAUGES

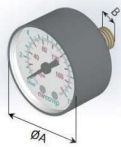
STANDARD



CODE	RANGE		ØA	B	CH
	BAR	PSI			
A380000026*	0 ÷ 12	0 ÷ 175	40	G 1/8	14
A380000055*	0 ÷ 6	0 ÷ 85	40	G 1/8	12
A380000114*	0 ÷ 2,5	0 ÷ 36	40	G 1/8	12
A750100010*	0 ÷ 12	0 ÷ 175	50	G 1/8	14
A750100011	0 ÷ 6	0 ÷ 85	50	G 1/8	14
A950100026*	0 ÷ 12	0 ÷ 175	63	G 1/4	14

* Aircomp customized version

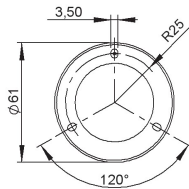
MINI



CODE	RANGE		ØA	B	CH
	BAR	PSI			
A350100035*	0 ÷ 6	0 ÷ 85	25	G 1/8	11
A350100025*	0 ÷ 12	0 ÷ 175	25	G 1/8	11

* Aircomp customized version

FLANGED



CODE	RANGE		B
	BAR	PSI	
A380000119	0 ÷ 2,5	0 ÷ 36	G 1/8
A380000116	0 ÷ 6	0 ÷ 85	G 1/8
A380000118	0 ÷ 12	0 ÷ 175	G 1/8

AIR PREPARATION

VALVES

CYLINDERS

FITTINGS

WATER PREPARATION