

Tyre pressure gauge model overview

Model	Art. no.	Working pressure [bar]	Max. working pressure [bar]	Hose length [cm]	Weight [kg]	Page in the catalogue
RF 12 MG	DGKD004021	0.7-12	15	150	0.8	236
RF 12 MG 2,5	DGKD004026	0.7-12	15	250	0.8	236
RF 12 DVG 0,8	DGKD004027	0.7-12	15	80	0.8	236
RF-RM „geeicht“	DGKD004017	10		41	0.36	236
RF-RM	DGKD040011	7		41	0.40	237
RF-RMG	DGKD004009	0-12		46 + 30	0.90	237
RF-RMG-K	DGKD004011	0-12		45	0.70	237

Tyre pressure gauges

Extremely robust, exceptionally precise –
For motorcycles, passenger cars,
transporters and trucks



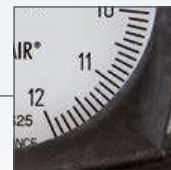
Unbeatable for everyday use in the workshop, with extremely robust, impact-resistant housing



Pressure gauge calibrated according to EEC type approval for maximum precision



Ergonomic buttons for precise regulation of the air flow rate



Large application range with pressure range from 0.7 to 12 bar



Example: Tyre pressure gauge RF 12 MG

Choose between our standard or professional tyre inflators with or without calibration function and select any version of calibrated tyre inflator between straight plug-in valve or filling station plug (double-sided valve connector) and different hose lengths.

Tyre pressure gauges

Tyre pressure gauge - calibrated for tyres up to 12 bar

- Pressure gauge calibrated according to EEC type approval for maximum precision
- Ergonomic buttons for precise regulation of the air flow rate
- Unbeatable for everyday use in the workshop, with extremely robust, impact-resistant housing
- Large application range with pressure range from 0.7 to 12 bar



RF 12 MG

- Simple operation thanks to straight plug-in valve
- 1.5 m hose for particularly efficient working progress



RF 12 MG 2,5

- Simple operation thanks to straight plug-in valve
- 2.5 m hose for increased safety distance in accordance with BG recommendation BGI 884



RF 12 DVG 0,8

- Particularly suitable for tyres with limited accessibility (such as twin tyres), with valve connector on both sides for use at petrol stations
- 0.8 m long hose for pleasant, flexible work



Model	Art. no.	Working pressure (bar)	Max. working pressure (bar)	Temperature-resistant up to (°C)	Hose length (cm)	Weight (kg)
RF 12 MG	DGKD004021	0.7-12	15	-20 – +60	150	0.8
RF 12 MG 2,5	DGKD004026	0.7-12	15	-20 – +60	250	0.8
RF 12 DVG 0,8	DGKD004027	0.7-12	15	-20 – +60	80	0.8

Accessories

Model	Art. no.	Suitable for
SL-1,5m-kpl-M	DGKB004020	RF-12 MG and RF 12 MG 2,5
SL-2,5m-kpl-M	DGKB004021	RF-12 MG and RF 12 MG 2,5
SL-0,8m-DV	DGKB004022	RF 12 DVG 0,8

Tyre pressure gauge „calibrated“

- Pressure gauge calibrated according to EEC type approval for maximum precision
- Simple operation thanks to straight plug-in valve
- Ideal for DIY and use at home

Calibrated	✓
Pressure gauge dia. 60 mm with rubber protection	✓

Model	Art. no.	Working pressure (bar)	Hose length (cm)	Weight (kg)	Pressure gauge dia. (mm)
RF-RM „geeicht“	DGKD004017	10	40	0.36	63



Tip

The initial calibration is valid for 2 years and begins on 31.12 of the production date (not invoicing date). The device must be recalibrated once this period has lapsed.

Tyre pressure gauge

- Robust aluminium body extends the service life of the device
- Simple operation thanks to straight plug-in valve
- Ideal for DIY and use at home

Pressure gauge dia. 60 mm with rubber protection	✓
Includes 3 replaceable nozzle attachments	✓

Model	Art. no.	Working pressure (bar)	Hose length (cm)	Weight (kg)	Pressure gauge dia. (mm)
RF-RM	DGKD004011	7	41	0.4	60



Tyre pressure gauge

- Robust aluminium body extends the service life of the device
- Connection hose with rotating adapter for easier working

Pressure gauge 80 mm dia. with rubber protection	✓
RF-RMG features: Double-sided valve connector	✓
RF-RMG-K features: Rocker arm connector	✓

Model	Art. no.	Working pressure (bar)	Hose length (cm)	Weight (kg)	Pressure gauge dia. (mm)
RF-RMG	DGKD004009	0-12	46 + 30	0.9	80
RF-RMG-K	DGKD004011	0-12	45	0.7	80



Accessories

Model	Art. no.
ED-Set-RM	DGKB040160

