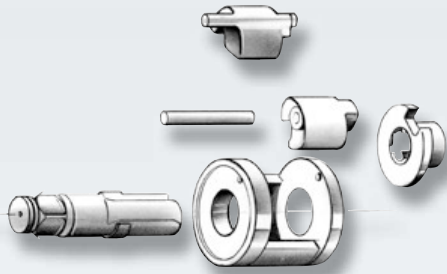


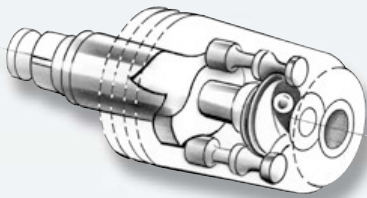
Which is the right impact screwdriver for the job?



Single-stroke impact screwdriver

The tried-and-tested single-stroke impact screwdriver delivers one stroke per rotation to one side of the drive spindle for high power generation.

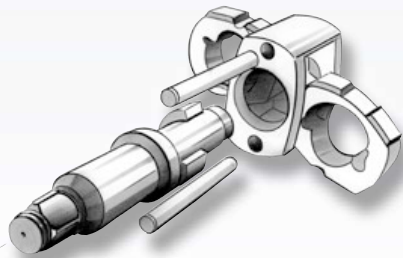
Impact screwdrivers of this kind are suitable for light to moderately heavy assembly work.



Roller impact screwdriver (also known as pin/Dynapact impact screwdriver)

The roller impact screwdriver strikes the drive spindle with two pins. It is characterised by its particularly low vibration level and rapid torque build-up.

Impact screwdrivers of this kind are suitable for rapid assembly work.



Twin-hammer impact mechanism

The twin-stroke impact screwdriver operates with two ring strokes, delivering two strokes per rotation, one on each side of the drive spindle. This makes for a compact design and allows the impact screwdriver to achieve a particularly high peak torque.

Impact screwdrivers of this kind are suitable for difficult to very difficult screw connections.

Always use a tool that corresponds to requirements. Use of an oversized tool can result in damage to the screw connection and/or to the workpiece. Use of an undersized tool causes excessive wear to the tool.

Recommended values for tightening torques for screws in accordance with DIN 912

Dimensions	Standard thread					
	Tightening torque (Nm)					
Property class*	4.6	5.6	6.8	8.8	10.9	12.9
M 2x0,40	0	0	0	0	0	1
M 3x0,50	0	1	1	1	2	2
M 4x0,70	1	1	2	3	4	5
M 5x0,80	2	3	5	6	8	10
M 6x1,00	4	5	8	10	14	17
M 8x1,25	9	12	19	25	35	42
M 10x1,50	19	23	37	49	70	83
M 12x1,75	32	40	65	86	121	146
M 14x2,00	52	65	104	138	194	233
M 16x2,00	81	101	161	215	302	363
M 18x2,50	111	139	222	296	417	500
M 20x2,50	157	197	315	420	590	709
M 22x2,50	215	269	430	574	807	968
M 24x3,00	272	340	544	726	1020	1224
M 27x3,00	400	500	800	1067	1500	1800
M 30x3,50	542	677	1083	1445	2032	2438
M 33x3,50	739	923	1477	1969	2770	3323
M 36x4,00	948	1185	1896	2528	3555	4266

Dimensions	Fine thread					
	Tightening torque (Nm)					
Property class*	4.6	5.6	6.8	8.8	10.9	12.9
M 8 x 1,00	10	13	20	27	38	45
M 10 x 1,25	21	26	42	56	78	94
M 12 x 1,50	34	43	68	91	128	153
M 14 x 1,50	56	70	113	150	211	253
M 16 x 1,50	87	108	173	231	324	389
M 18 x 1,50	126	157	252	336	472	567
M 20 x 1,50	176	220	352	469	659	791
M 22 x 1,50	237	297	475	633	890	890
M 24 x 2,00	312	390	624	832	1169	1403

* Property classes in accordance with DIN 912

Impact screwdrivers are designed for heavy screwing work carried out over a short period of time. If a screwing process that is carried out in the right operating conditions (pressure, air volume, air quality) cannot be completed after a few minutes, we recommend using a more powerful tool.

An overview of our impact screwdrivers

	DGKD322801	DGKD322815	DGKD322810	DGKD327610	DGKD322816	DGKD322819	DGKD322820	DGKD322831	DGKD322841	DGKD322842
	SGS 360 3/8"	SGS 430 1/2"	SGS 440 1/2"	SGS 610 1/2"	SGS 850 1/2"	SGS 1100 1/2"	SGS-Set Base 1/2"	SGS 1700 3/4"	SGS 2000 1"	SGS 2700 1"
Application options										
Pkw-Räder		++	++	++	++	+	+			
Pkw-Achsen			++	++	++	++	+			
Pkw-Motoren	++	++	++	+						
Pkw-Karosserie	++	++	++	++			+			
Nkw-Räder					++	++		++		
Nkw-Achsen				++	++	++		++		
Nkw-Motoren	++	++	++	+			+			
Nkw-Karosserie		++	+	+	++	++	+	++		
Lkw-Räder								++	++	++
Lkw-Achsen						++		++	++	++
Lkw-Motoren		++	++	++	++		+			
Lkw-Karosserie					++	++		++	++	++
Metall-Konstruktionen	++	++	++	+	++	++	+	++	++	
Maschinen	++	++	++	+	++	++	+	++	++	

++ very well suited + well suited

Impact screwdriver model overview

Model	Art. no.	Socket [square]	Air requirement [l/s]	Working torque [Nm]	Weight [kg]	Page in the catalogue
SGS 360-3/8"	DGKD322801	3/8"	5	340	1.3	178
SGS 430-1/2"	DGKD322815	1/2"	5	405	1.3	178
SGS 440-1/2"	DGKD322810	1/2"	5.3	440	1.1	178
SGS 610-1/2"	DGKD327610	1/2"	6	600	2.3	179
SGS 850-1/2"	DGKD322816	1/2"	8.2	815	2.0	179
SGS 1100-1/2"	DGKD322819	1/2"	9.2	1,100	2.1	179
SGS-Set 1/2" Base	DGKD322820	1/2"	6	345	2.2	180
SGS 1700-3/4"	DGKD322831	3/4"	9.1	1,629	3.7	180
SGS 2000-1"	DGKD322841	1"	9.1	1,900	3.7	180
SGS 2700-1"	DGKD322842	1"	24	2,700	11.0	181

Impact screwdrivers

Extremely powerful and easy to use –
the right model for every application



Extremely lightweight
thanks to high-quality
composite housing



Long service life
thanks to high-quality
and robust components



Economical to use with
energy-efficient 3-stage
torque setting



Fast work
with simple one-handed
changeover from clockwise
to anti-clockwise direction



Extremely powerful
with minimal wear thanks
to robust Twin-Hammer
impact mechanism



Example: Impact screwdriver SGS 850-1/2"



Ergonomic handle
to avoid intermittent stress
of hand-arm system

These impact screwdrivers impress with their compact design and simultaneously high torques. The different models are suitable for various screw connections at machines and metal structures, motors, tyres and vehicle bodies. They are particularly ideal for motor vehicle, commercial vehicle, bus, bike, repair, assembly and metalworking companies, as well as hauliers, agriculture and industry.

Impact screwdrivers

Impact screwdriver 3/8"



- Ideal for car and truck engines and motors, metal structures and mechanical engineering thanks to 3/8" spindle
- Powerful with 564 Nm breakaway torque and ultralight design at 1.3 kg
- Avoidance of intermittent stress of hand-arm system thanks to ergonomic handle
- Optimal centre of gravity for secure and pleasant guiding of device
- Switch from clockwise to anti-clockwise operation with one hand to save time

✓	Twin-Hammer impact mechanism
✓	3 torque stages in clockwise direction
✓	Lightweight, sound-insulated composite housing that is also insulated against the cold
✓	Optimal centre of gravity for secure and pleasant guiding of device

Model	Art. no.	Socket (square)	Air requirement (l/s)	Working pressure (bar)	Working torque (Nm)	Vibration (m/s ²)	Weight (kg)	Dimensions (L x W x H)
SGS 360-3/8"	DGKD322801	3/8"	5	6.3	340	4.6	1.3	153x55x216

Impact screwdriver 1/2"



- Ideal for automotive shops, repair shops, tyre services, assembly shops, metalworking shops
- Perfect for awkward spots that are difficult to access thanks to compact small design
- Extremely powerful with 678 Nm breakaway torque
- Avoidance of intermittent stress of hand-arm system thanks to ergonomic handle
- Optimal centre of gravity for secure and pleasant guiding of device
- Switch from clockwise to anti-clockwise operation with one hand to save time

✓	Twin-Hammer impact mechanism
✓	3 torque stages in clockwise direction
✓	Lightweight, sound-insulated composite housing that is also insulated against the cold
✓	Optimal centre of gravity for secure and pleasant guiding of device

Model	Art. no.	Socket (square)	Air requirement (l/s)	Working pressure (bar)	Working torque (Nm)	Vibration (m/s ²)	Weight (kg)	Dimensions (L x W x H)
SGS 430-1/2"	DGKD322815	1/2"	5	6.3	405	4.6	1.3	153x55x216

Impact screwdriver 1/2"



- Compact design ideal for use in constricted spaces
- Excellent weight/performance ratio, up to 700 Nm breakaway torque with weight of 1.1 kg
- Switch from clockwise to anticlockwise operation with one hand to save time
- Anti-slip and ergonomic rubber handle for comfortable work
- Versatile 1/2" spindle is particularly suitable for wheel changes and all kinds of medium-sized screw connection in passenger vehicle, repair, assembly and metalworking workshops

✓	Twin-hammer impact mechanism
✓	2 torque stages in clockwise direction
✓	Lightweight cold and noise isolating composite housing

700 Nm
Breakaway torque

Model	Art. no.	Socket (square)	Air requirement (l/s)	Working pressure (bar)	Working torque (Nm)	Vibration (m/s ²)	Weight (kg)	Dimensions (L x W x H)
SGS 440-1/2"	DGKD322810	1/2"	5.3	6.3	440	5.1	1.1	121x63x170

Impact screwdriver 1/2"

- Ideal for automotive shops, repair shops, tyre services, assembly shops, metalworking shops
- Extremely robust, impact-resistant device with one-piece metal housing
- Rubber handle reduces vibrations and provides insulation against the cold
- Switch from clockwise to anti-clockwise operation with one hand to save time

Roller hammer impact mechanism	✓
4 torque stages in clockwise direction	✓



Model	Art. no.	Socket (square)	Air requirement (l/s)	Working pressure (bar)	Working torque (Nm)	Vibration (m/s ²)	Weight (kg)	Dimensions (L x W x H)
SGS 610-1/2"	DGKD327610	1/2"	6	6.3	600	3.2	2.3	190x65x225

Impact screwdriver 1/2"

- Ideal for automotive shops and tyre services thanks to diverse application possibilities
- Perfect for large and stiff screw connections thanks to massive breakaway torque of 1356 Nm
- Avoidance of intermittent stress of hand-arm system thanks to ergonomic handle
- Optimal centre of gravity for secure and pleasant guiding of device
- Switch from clockwise to anti-clockwise operation with one hand to save time

Twin-Hammer impact mechanism	✓
Lightweight, sound-insulated composite housing that is also insulated against the cold	✓
SGS 850 – 3 torque stages in clockwise direction	✓
SGS 850 D – 1 torque stage in clockwise direction; limited tightening torque of 90 Nm	✓



Model	Art. no.	Socket (square)	Air requirement (l/s)	Working pressure (bar)	Working torque (Nm)	Vibration (m/s ²)	Weight (kg)	Dimensions (L x W x H)
SGS 850-1/2"	DGKD322816	1/2"	8.2	6.3	815	4.8	2.0	183x69x230

Impact screwdriver 1/2"

- Universal application for passenger car and truck engines, metal structures and mechanical engineering thanks to high torque with 1/2" socket
- Excellent weight/performance ratio, up to 1750 Nm breakaway torque with weight of 2.1 kg
- Perfect for large screw connections thanks to breakaway torque of 1750 Nm
- Anti-slip and ergonomic rubber handle for comfortable work

Twin-Hammer impact mechanism	✓
3 torque stages in clockwise direction	✓
Lightweight, sound-insulated composite housing that is also insulated against the cold	✓



Model	Art. no.	Socket (square)	Air requirement (l/s)	Working pressure (bar)	Working torque (Nm)	Vibration (m/s ²)	Weight (kg)	Dimensions (L x W x H)
SGS 1100-1/2"	DGKD322819	1/2"	9.2	6.3	1,100	7.3	2.1	194x68x207

Impact screwdrivers

Impact screwdriver 1/2"



- Universal impact screwdriver set with selection of versatile accessories for a wide range of applications, even in the DIY sector
- Air control valve for stepless adaptation of the torque for clockwise/anticlockwise rotation
- Switch from clockwise to anticlockwise operation with one hand to save time
- Rubber handle reduces vibrations and insulates against the cold

✓	Hammer impact mechanism
✓	In plastic case with 10 socket spanners (10 to 13, 15, 17, 19, 22, 24, 27)

Model	Art. no.	Socket (square)	Air requirement (l/s)	Working pressure (bar)	Working torque (Nm)	Vibration (m/s ²)	Weight (kg)	Dimensions (L x W x H)
SGS-Set 1/2" Base	DGKD322820	1/2"	6	6.3	345	3.8	2.2	178x70x225

Impact screwdriver 3/4"



- Extremely powerful impact screwdriver with 2978 Nm breakaway torque for commercial vehicles workshops and tyre services
- Avoidance of intermittent stress of hand-arm system thanks to ergonomic handle
- Optimal centre of gravity for secure and pleasant guiding of device
- Switch from clockwise to anti-clockwise operation with one hand to save time

✓	Twin-Hammer impact mechanism
✓	3 torque stages in clockwise direction
✓	Lightweight, sound-insulated composite housing that is also insulated against the cold
✓	Excellent weight-performance ratio with only 3.7 kg

Model	Art. no.	Socket (square)	Air requirement (l/s)	Working pressure (bar)	Working torque (Nm)	Vibration (m/s ²)	Weight (kg)	Dimensions (L x W x H)
SGS 1700-3/4"	DGKD322831	3/4"	9.1	6.3	1,629	4.8	3.7	214x84x266

Impact screwdriver 1"



- Ideal for large screw fittings on trucks and buses thanks to 1" spindle
- Extremely powerful with 3150 Nm breakaway torque
- Practical one-handed operation with gun shape
- Avoidance of intermittent stress of hand-arm system thanks to ergonomic handle
- Optimal centre of gravity for secure and pleasant guiding of device

	Twin-Hammer impact mechanism	✓
	3 torque stages in clockwise direction	✓
	Lightweight, sound-insulated composite housing that is also insulated against the cold	✓

Model	Art. no.	Socket (square)	Air requirement (l/s)	Working pressure (bar)	Working torque (Nm)	Vibration (m/s ²)	Weight (kg)	Dimensions (L x W x H)
SGS 2000-1"	DGKD322841	1"	9.1	6.3	1,900	4.8	3.7	214x84x266

Impact screwdriver 1"

- Very powerful impact screwdriver for tough applications at or in commercial vehicles, buses, agricultural and construction machines
- Long 1" spindle for easy work, even on double tyres
- Spindle with pinhole for safeguarding the socket spanner with locking pin

Twin-hammer impact mechanism	✓
3 torque settings for clockwise and anticlockwise rotation	✓
Additional side handle for smooth device guidance	✓



Model	Art. no.	Socket (square)	Air requirement (l/s)	Working pressure (bar)	Working torque (Nm)	Vibration (m/s ²)	Weight (kg)	Dimensions (L x W x H)
SGS 2700-1"	DGKD322842	1"	24	6.3	2.700	18.5	11	527x213x176

Set of sockets for impact screwdriver

Model	Art. no.	Number of socket spanners (pc.)	Socket sizes
SKSL-Set 3/8"-8	DGKD322275	8	8, 10, 11, 12, 13, 14, 17, 19
SKSL-Set 1/2"-10	DGKD322268	10	11, 12, 13, 14, 15, 17, 19, 21, 22, 24
SKSL-Set 1/2"-2 long	DGKD322292	2	17, 19 extended version, 78 mm long
SKSL-Set 1/2"-3 Alu	DGKD322294	3	17, 19, 21 plastic-coated, for aluminium wheel rims
SKSL-Set 3/4"-8	DGKD322298	8	24, 27, 29, 30, 32, 35, 36, 38
SKSL-Set 1"-7	DGKD322278	7	24, 27, 30, 32, 35, 36, 38



Wall bracket for impact screwdriver 1/2"

Model	Art. no.
WH-SGS	DGKB322610

- Holder for impact screwdrivers up to 1/2"
- With 4 retaining pins for socket spanners and storage trays for small parts
- 2 strong magnetic holders for simple fastening to all vertical metal surfaces

